

CTS HERITAGE

HERITAGE SCREENER

CTS Reference Number:	CTS24_043
Client:	CK Rumboll
Date:	February 2024
Title:	Proposed Subdivision on Portion 3 of Farm Amoskuil No. 997, Division Malmesbury in the Western Cape Province

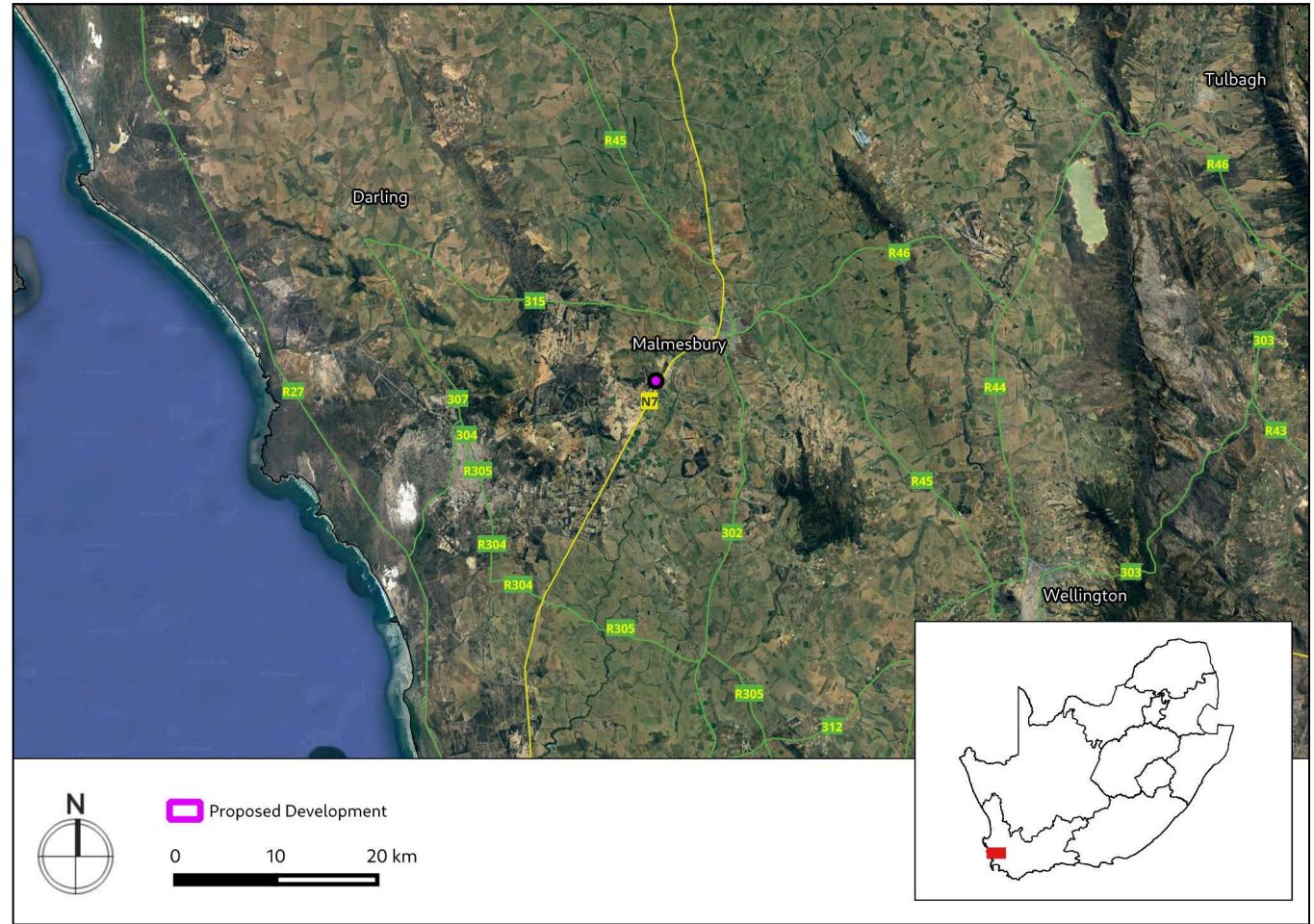


Figure A. Satellite map indicating the location of the proposed development in the Western Cape Province

Recommendation by CTS Heritage Specialists	<p>RECOMMENDATION</p> <p>Based on the available information, while it is not likely that the proposed development will impact on significant archaeological and palaeontological heritage resources, the proposed development may impact on the historic N7 and the adjacent historic town of Abbotsdale and as such, it is recommended that this impact is assessed in a heritage impact assessment.</p>
--	--



CTS HERITAGE

1. Proposed Development Summary

Proposed Subdivision on Portion 3 of Farm Amoskuil No. 997, Division Malmesbury in the Western Cape Province

2. Application References

Name of relevant heritage authority(s)	HWC
Name of decision making authority(s)	DEADP

3. Property Information

Latitude / Longitude	-33.499834, 18.660447
Erf number / Farm number	Portion 3 of Farm Amoskuil No. 997, Malmesbury Division
Local Municipality	Swartland Local Municipality
District Municipality	West Coast District Municipality
Province	Western Cape
Current Use	Agriculture
Current Zoning	Agricultural Zone 1

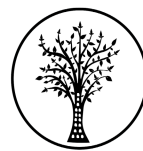
4. Nature of the Proposed Development

Total Surface Area of development	TBA
Depth of excavation (m)	TBA
Height of development (m)	TBA

CTS Heritage

238 Queens Road, Simons Town

Email: info@ctsheritage.com Web: www.ctsheritage.com



CTS HERITAGE

5. Category of Development

	Triggers: Section 38(8) of the National Heritage Resources Act
	Triggers: Section 38(1) of the National Heritage Resources Act
	1. Construction of a road, wall, powerline, pipeline, canal or other similar form of linear development or barrier over 300m in length.
	2. Construction of a bridge or similar structure exceeding 50m in length.
	3. Any development or activity that will change the character of a site-
x	a) exceeding 5 000m ² in extent
	b) involving three or more existing erven or subdivisions thereof
	c) involving three or more erven or divisions thereof which have been consolidated within the past five years
	4. Rezoning of a site exceeding 10 000m ²
	5. Other (state):

6. Additional Infrastructure

- TBA

CTS Heritage

238 Queens Road, Simons Town

Email: info@ctsheritage.com Web: www.ctsheritage.com

7. Mapping (please see Appendix 3 and 4 for a full description of our methodology and map legends)



Figure 1.1 Overview Map. Satellite image (2024) indicating the proposed development relative to Malmesbury.

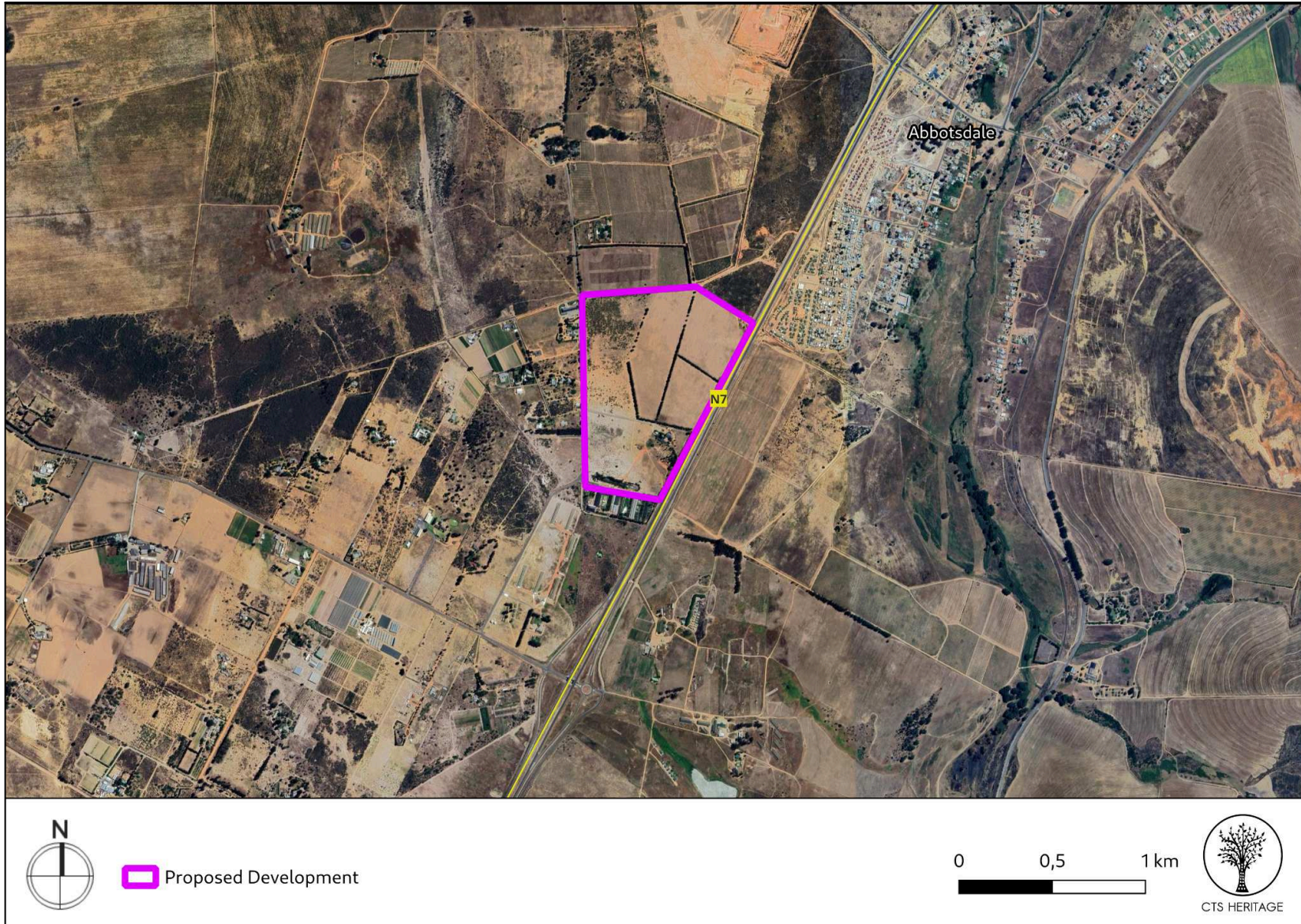


Figure 1.2 Overview Map. Satellite image (2024) indicating the proposed development area at closer range.

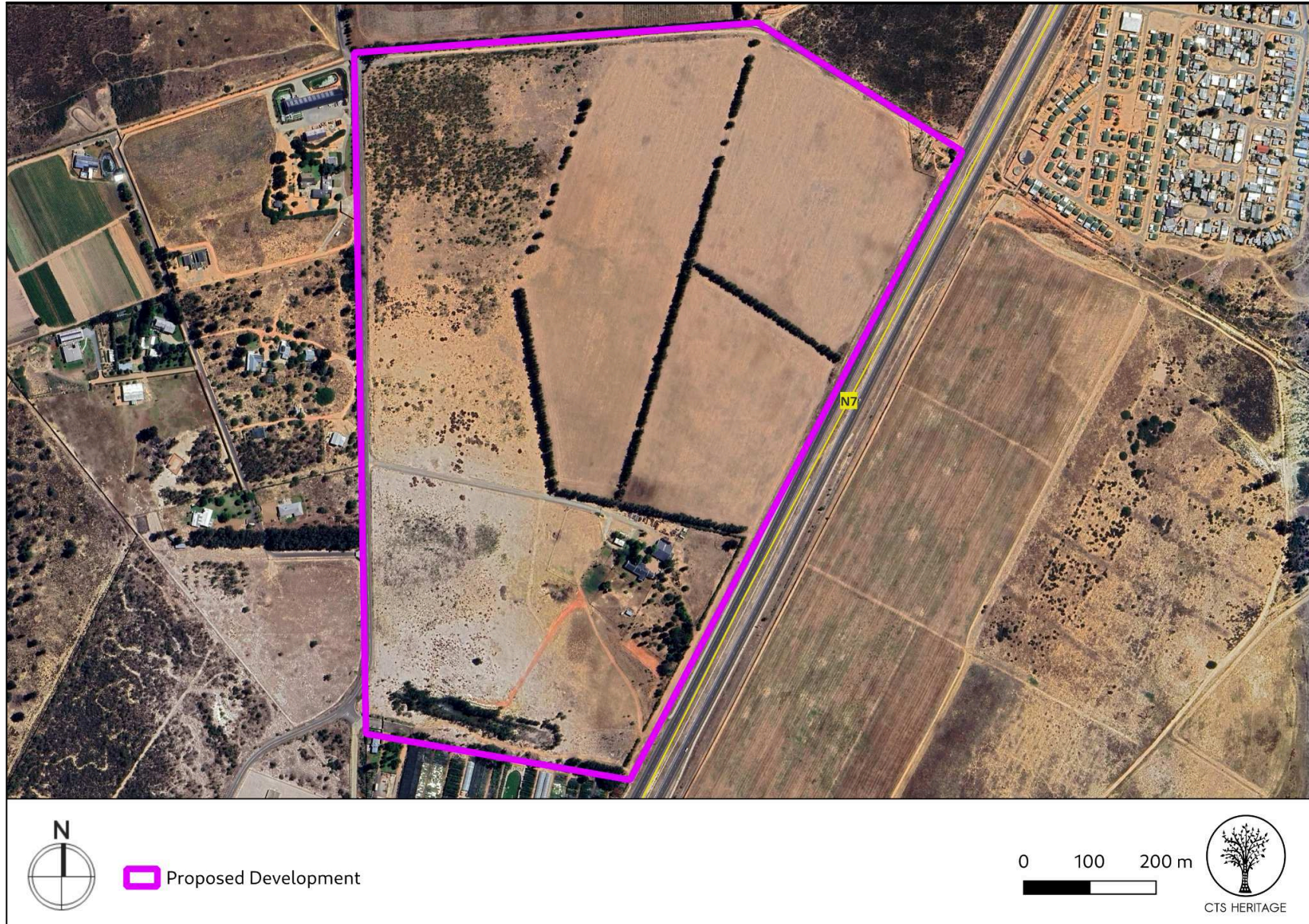


Figure 1.3 Overview Map. Satellite image (2024) indicating the proposed development area at closer range.

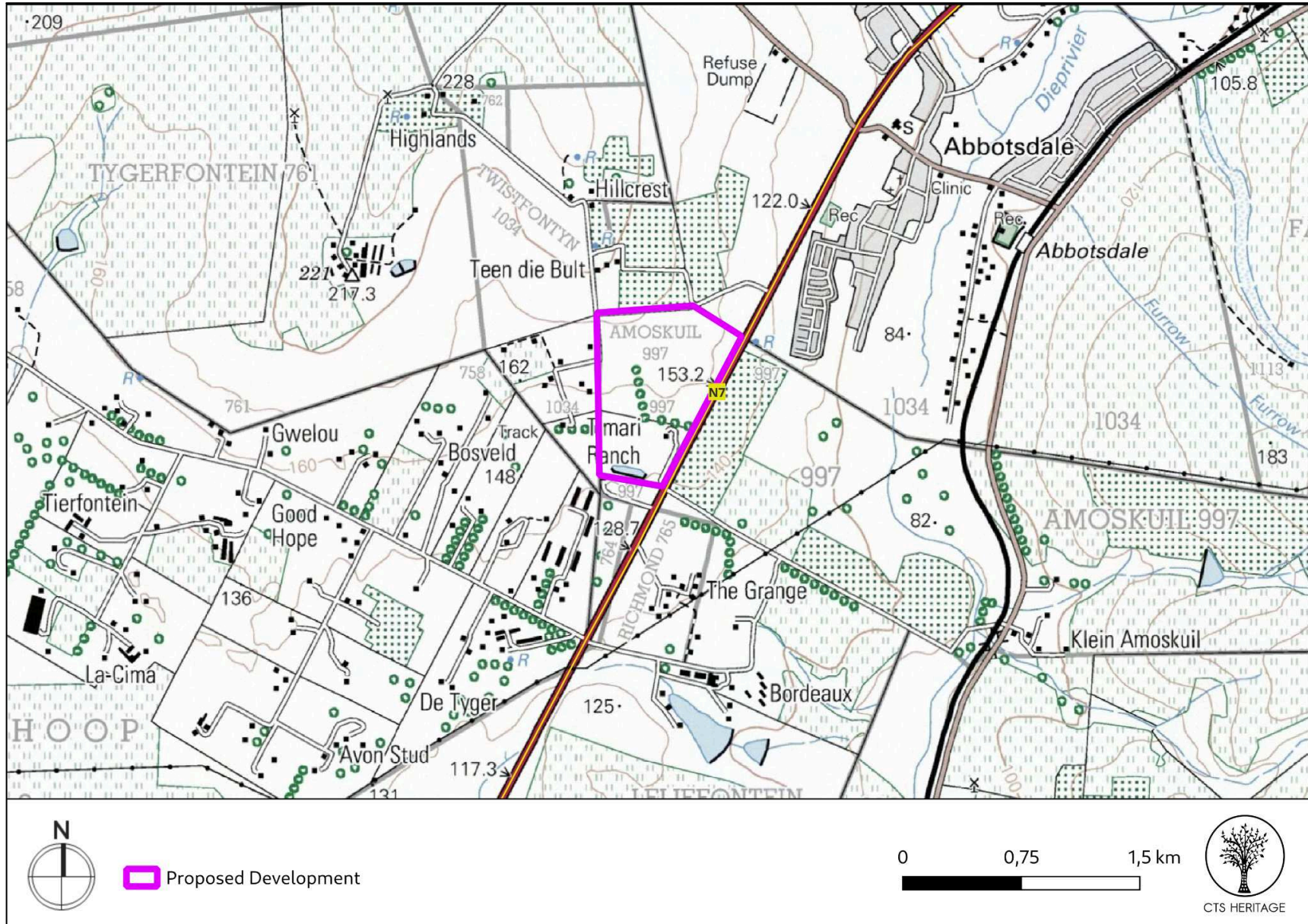
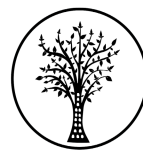


Figure 1.4 Overview Map. Extract from the 1:50 000 Topo Map indicating the proposed development area at closer range.



CTS HERITAGE

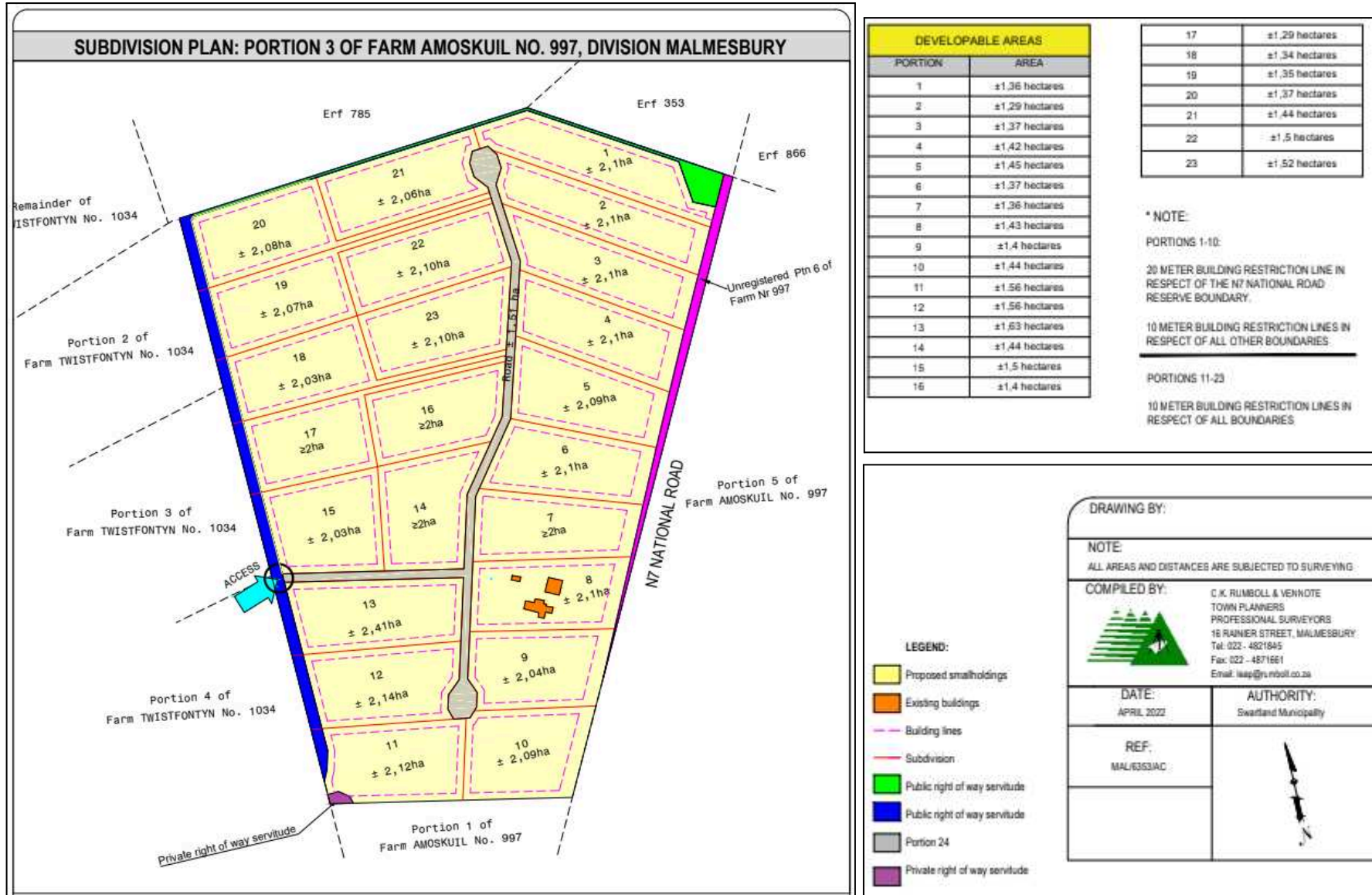
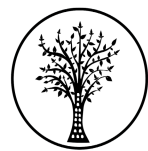


Figure 1.5 Overview Map. Map showing draft layout of the development area



CTS HERITAGE

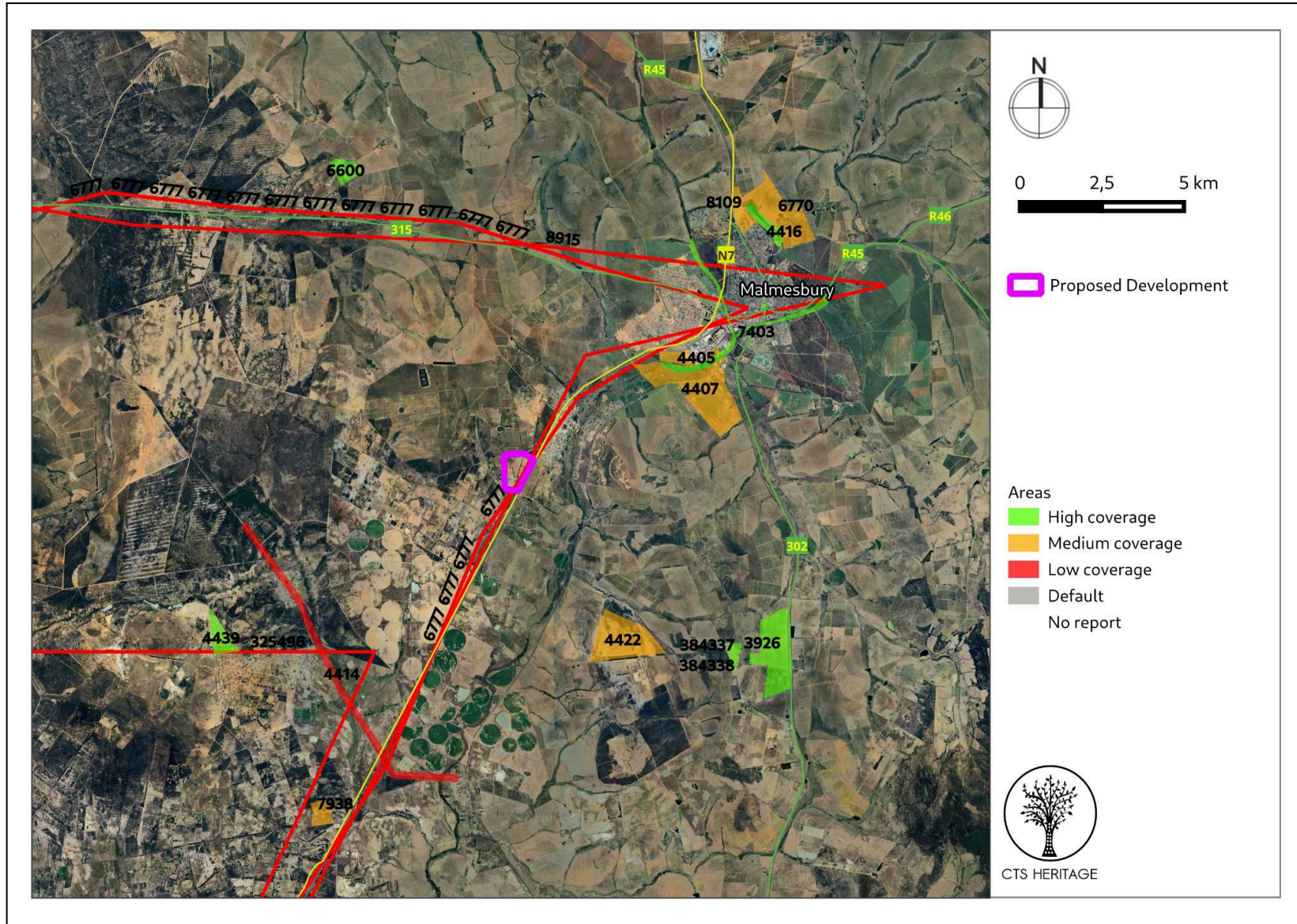


Figure 2. Previous HIAs Map. Previous Heritage Impact Assessments surrounding the proposed development area within 5km, with SAHRIS NIDS indicated. Please see Appendix 2 for a full reference list.

CTS Heritage

238 Queens Road, Simons Town

Email: info@ctsheritage.com Web: www.ctsheritage.com

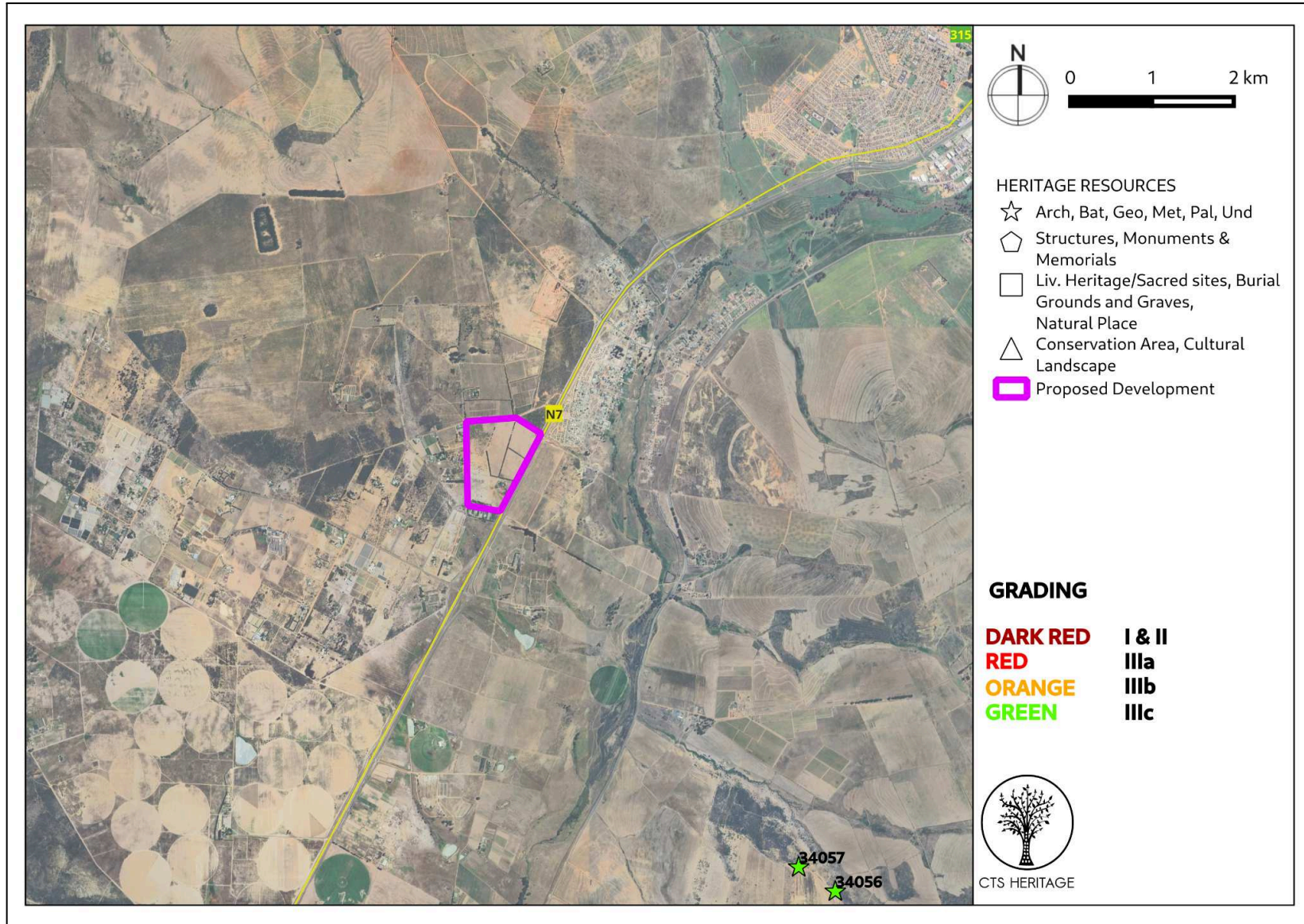


Figure 3.1 Heritage Resources Map. Heritage Resources previously identified in and near the study area, with SAHRIS Site IDs indicated. Please See Appendix 4 for a full description of heritage resource types.



CTS HERITAGE

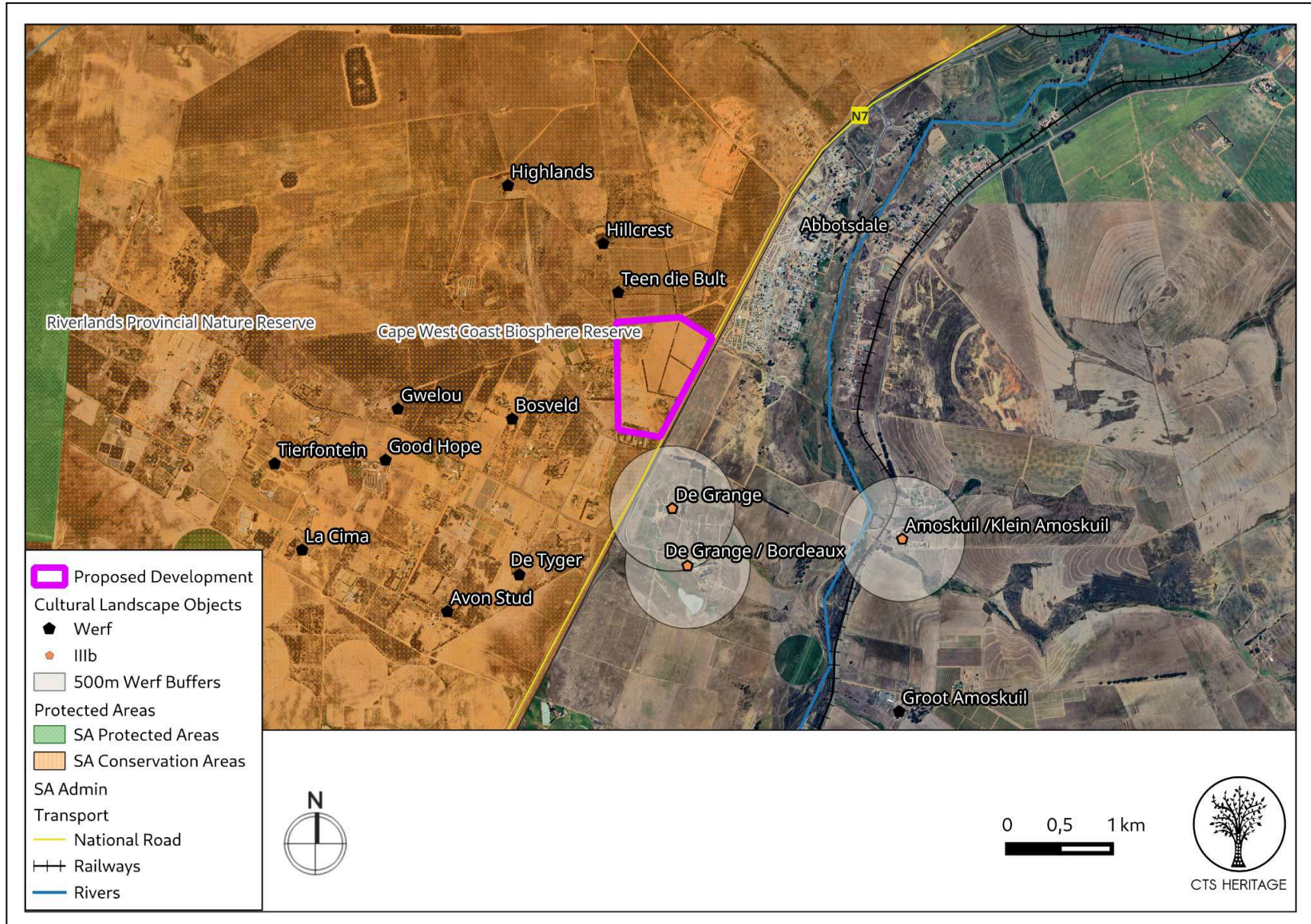
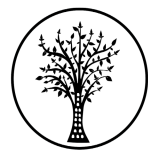


Figure 3.2 Cultural Landscape Map. Heritage Resources identified using the Topography 1:50 000 map

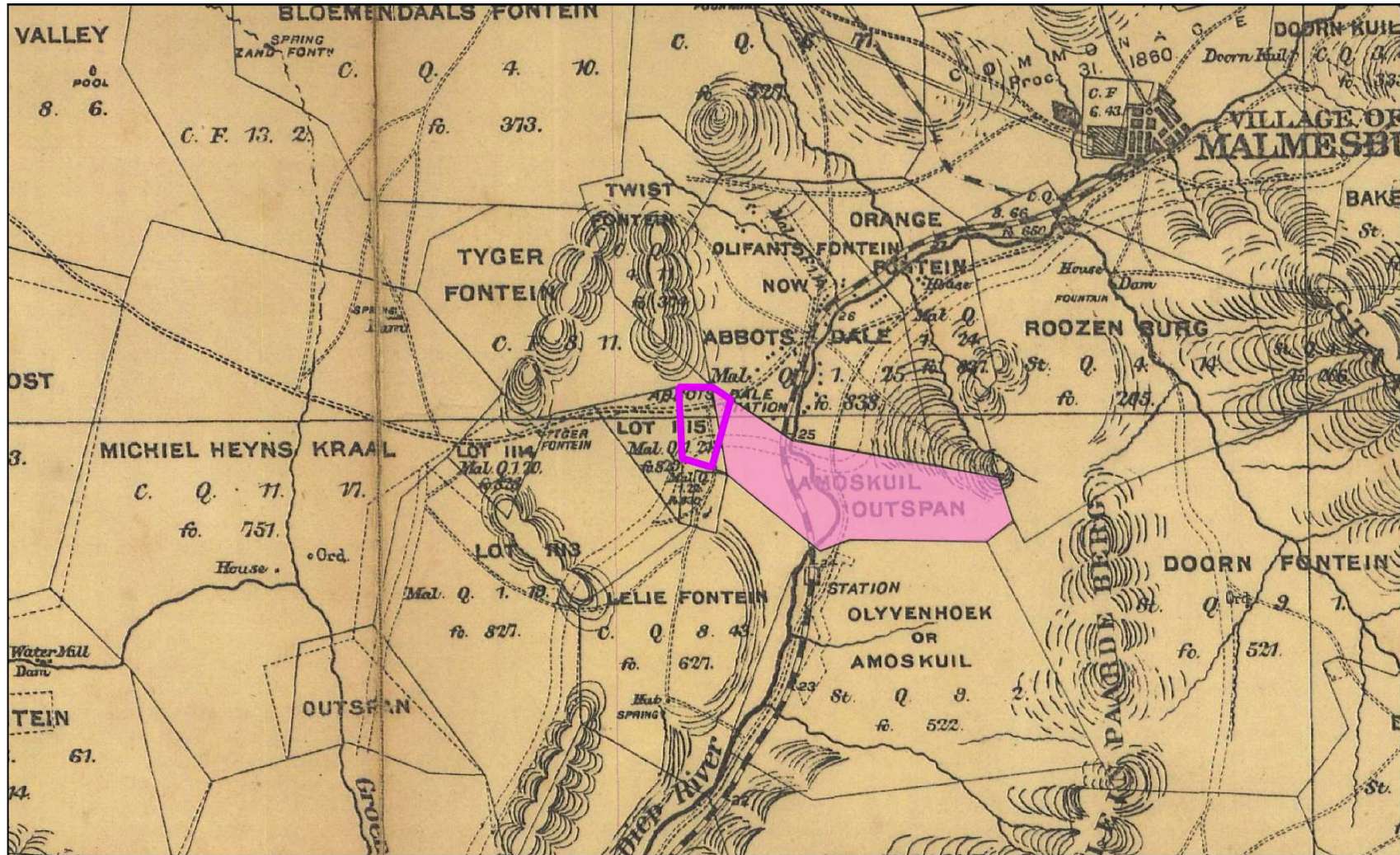
CTS Heritage

238 Queens Road, Simons Town

Email: info@ctsheritage.com Web: www.ctsheritage.com



CTS HERITAGE



 Proposed Development

0 1 2 km



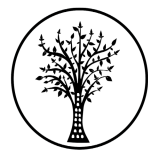
CTS HERITAGE

Figure 3.3 Historical Map. Extract from the Cape Malmesbury (1890) map. Proposed development is an approximation.

CTS Heritage

238 Queens Road, Simons Town

Email: info@ctsheritage.com Web: www.ctsheritage.com



CTS HERITAGE

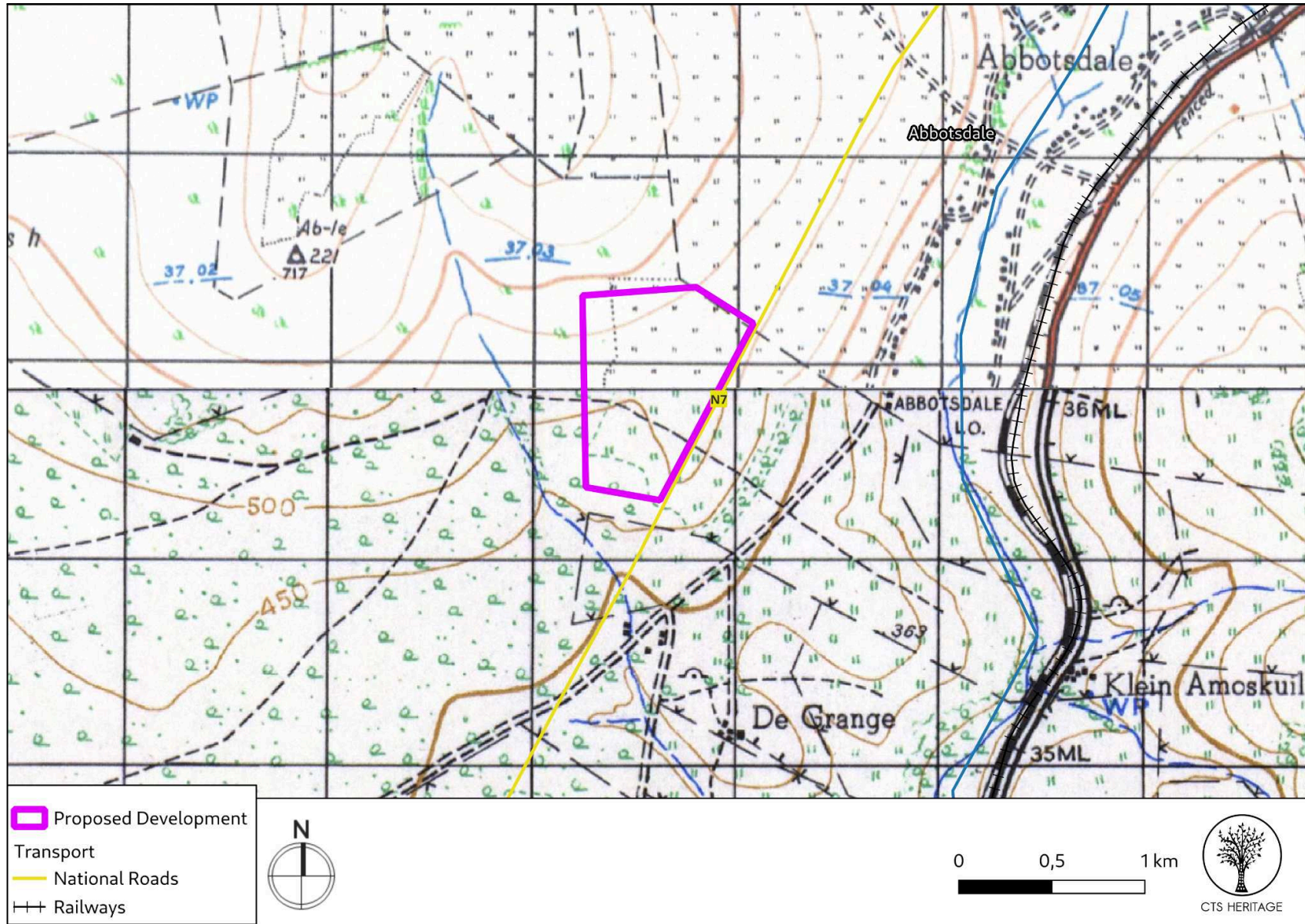
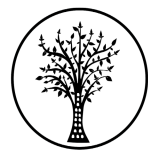


Figure 3.4 Historical Map. Extract from the First Edition Topo 1:50 000 map (1939) indicating the historical routes to Malmesbury.

CTS Heritage

238 Queens Road, Simons Town

Email: info@ctsheritage.com Web: www.ctsheritage.com



CTS HERITAGE

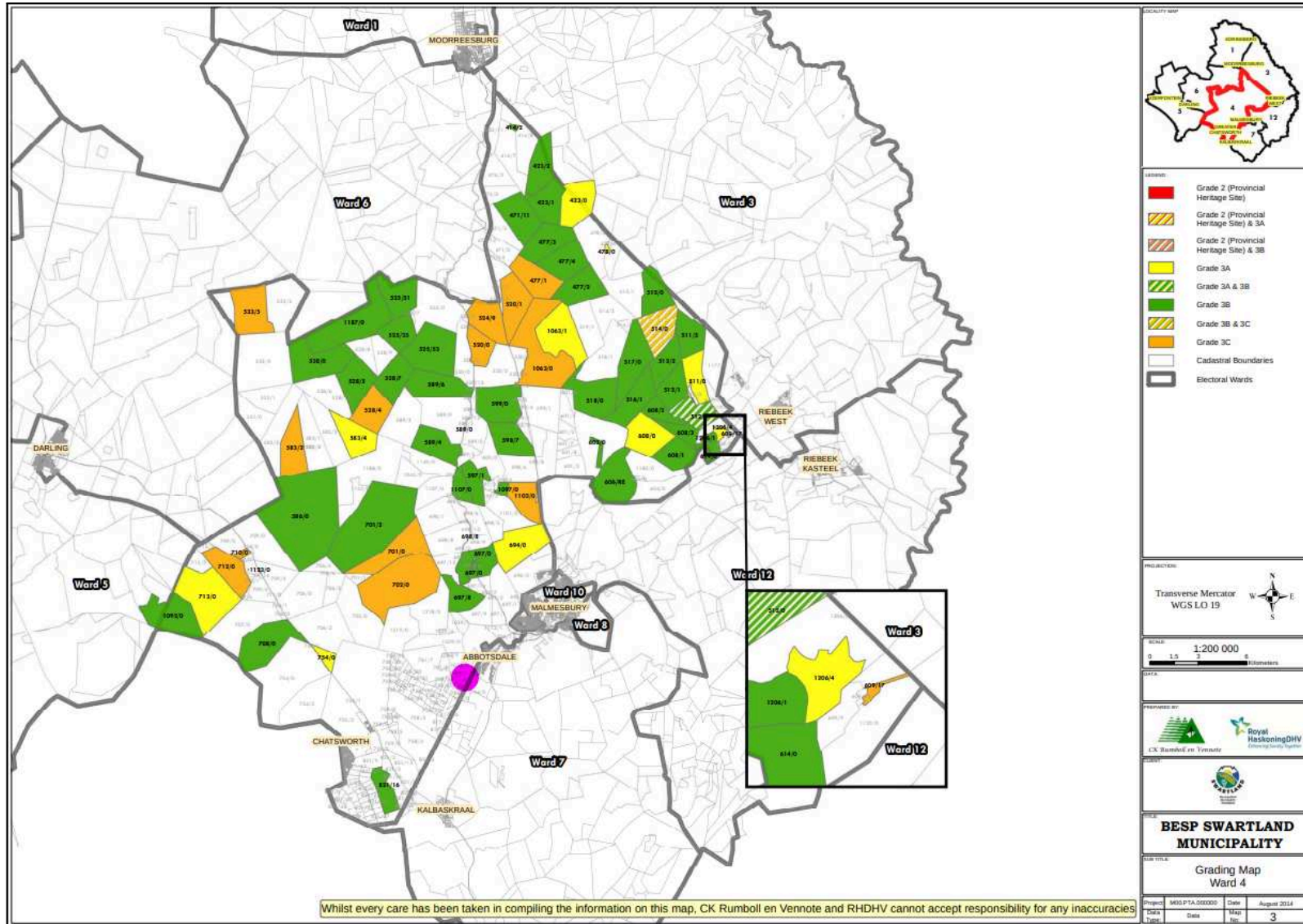


Figure 3.5 Ward Grading Map. Extract from the Swartland Rural Heritage Survey (Pentz, 2014). Proposed development is represented by a pink dot.¹

¹Swartland Rural Heritage Survey Grading Maps, https://sahris.sahra.org.za/sites/default/files/heritagereports/GradingMap_Combined_opt_v3.pdf

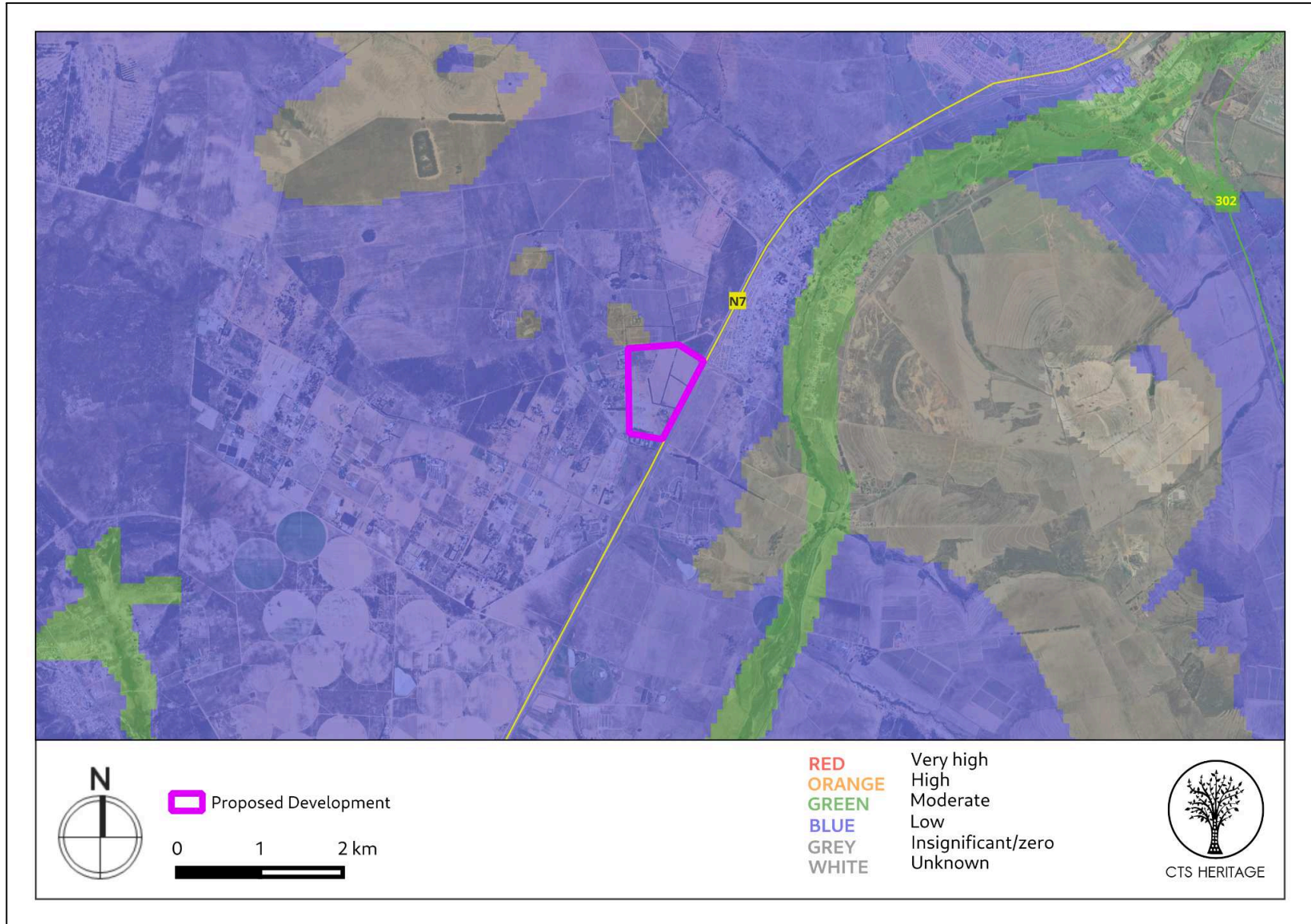


Figure 4. Palaeosensitivity Map. Indicating fossil sensitivity underlying the study area. Please See Appendix 3 for a full guide to the legend.



CTS HERITAGE

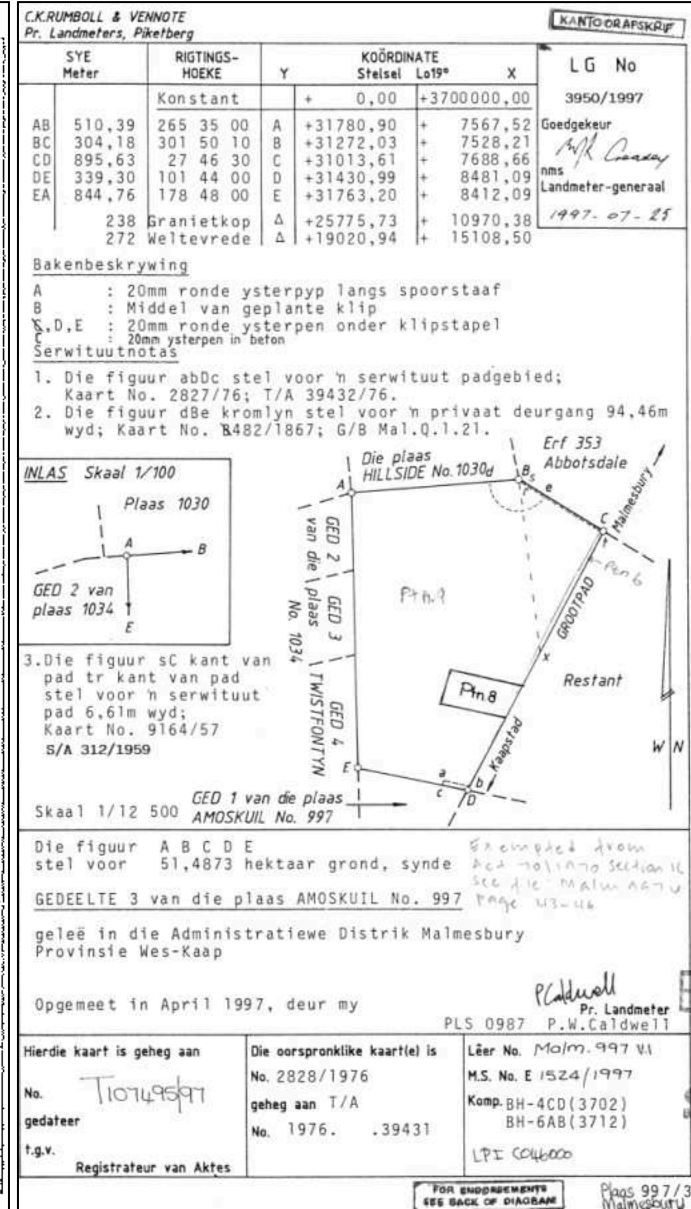
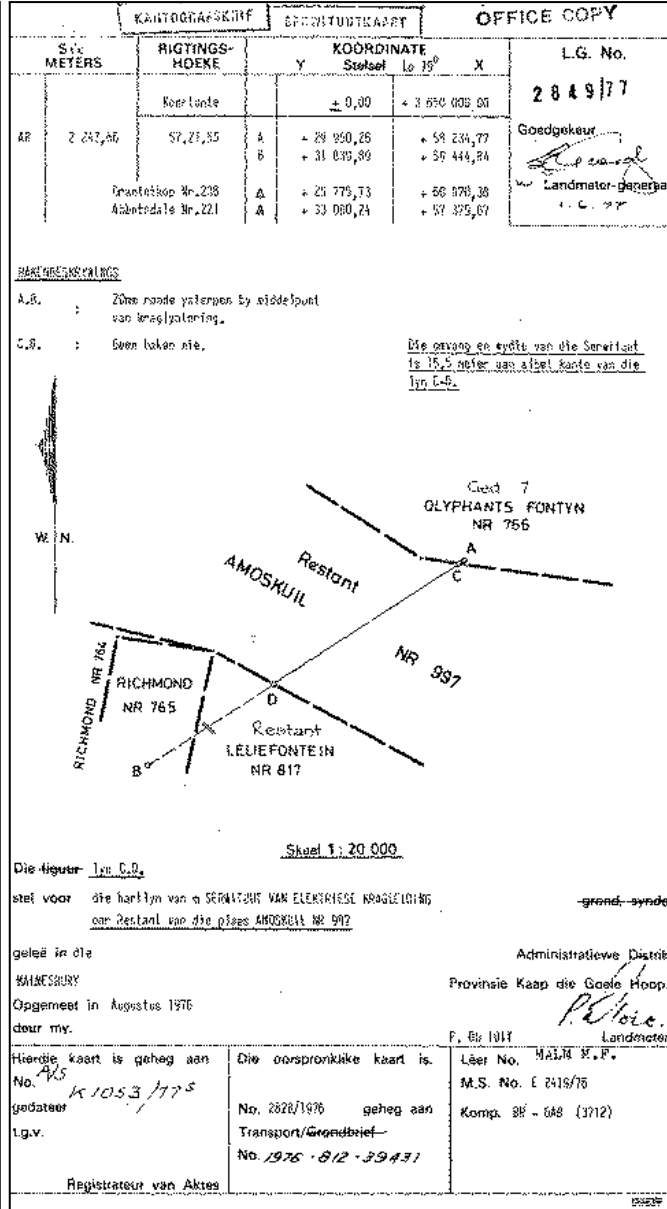
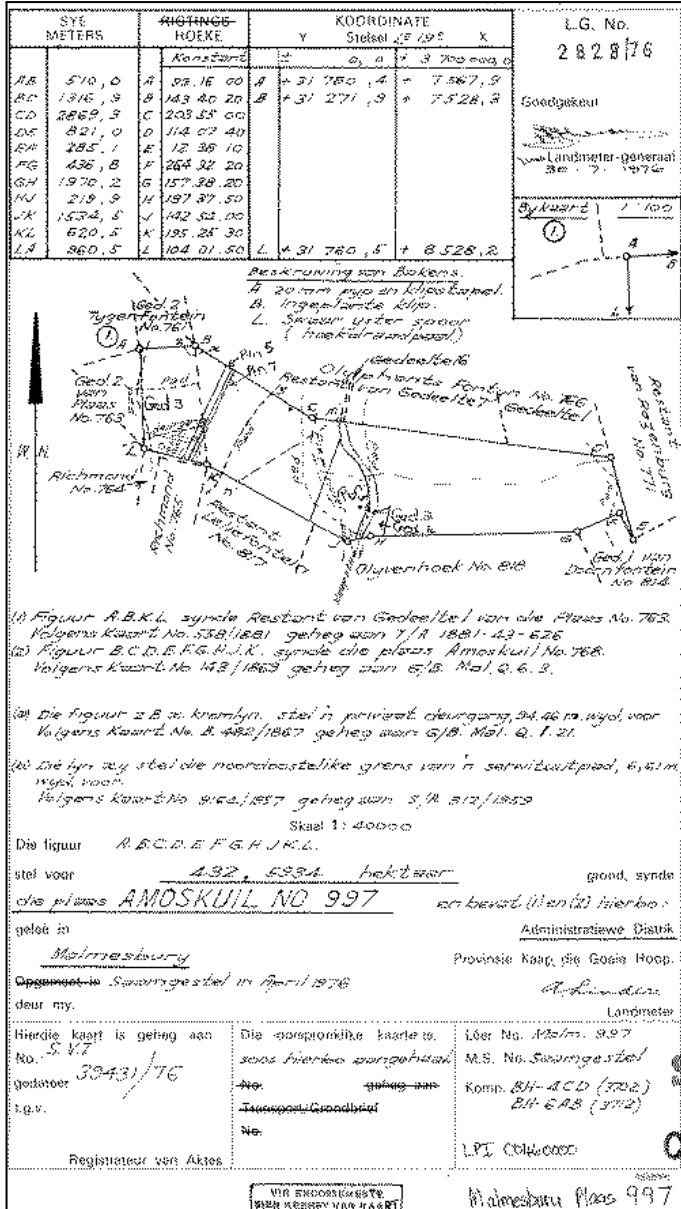


Figure 5a-c: SG Diagrams (1976, 1976 and 1997)



CTS HERITAGE

8. Heritage statement and character of the area

Background

The proposed subdivision falls along the N7, less than 1km from Abbotsdale, and within 10km of Malmesbury. According to the Swartland Rural Heritage Survey (Pentz, 2014), Abbotsdale was an early Anglican Mission settlement located 5km southwest of Malmesbury, established by Bishop Gray on the farm Olyphantsfontein in 1856. Designed by his wife, Sophie Gray, it was intended for both a mission church and settlement, benefiting from fertile lands along the Diep Rivier. Reflecting the evangelical movement of the 19th century, Abbotsdale, like other mission settlements such as Zuurbrak, provided land to homeless former slaves, contributing to its historical significance. The settlement is an example of linear development alongside a river “ *typical mission station requirement of small agricultural allotments along a river course.*” Though no longer a mission town, Abbotsdale remains spiritually important, maintaining an active Anglican community and serving as a local spiritual centre, as demonstrated by efforts in the mid-19th century to establish a church within the farming community.

The Swartland Survey also notes that the historical roots of Malmesbury as a town are intertwined with the broader development of the Swartland region, characterised by agricultural growth, especially in grain production, and the traditional practice of cattle farming, facilitated by abundant water sources and historic trade routes. Its establishment, like other early settlements, involved conflicts over grazing lands with the indigenous Khoe people, leading to their displacement as early as the 18th century. Malmesbury holds significant local historical importance as a church centre pivotal to the area's early growth in agriculture, industry, and trade, particularly in the grain sector. It stands as an early town in the heart of the Swartland, serving as its municipal hub, emblematic of its historical significance.²

The area proposed for the residential development is located within the Cape West Coast Biosphere Reserve. The Biosphere reserve is one of only 11 in South Africa, and “ *stretches northward from Diep River in Cape Town, South Africa to the Berg River and covers 378000 hectares of coastal lowland plains. It is unique in terms of its natural beauty, biodiversity, history, culture and location but the future of the area requires special management if it is to thrive.*”³ In 2000, local and provincial governments completed the formal designation, after the UNESCO Man and the Biosphere Programme designated the area as a biosphere reserve. It is also located less than 10km from the Riverlands Provincial Nature Reserve. “ *Riverlands was purchased by CapeNature and proclaimed as a reserve in 1985 owing to its high density of rare and locally endemic plant species.*”⁴

Cultural Landscape

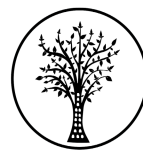
The area proposed for development is located within the Swartland District Municipality. The property slopes gently downward from the northwestern point to the southeastern point. In the heritage inventory completed for the Swartland by Pentz in 2014, it is noted that “ *The Swartland includes the districts of Malmesbury and Moorreesburg and stretches as far north as Piketberg, and as far west as Darling. The Berg River is considered to be the main artery. The overriding characteristic of the study area is the broad expansive nature of the landscape, particularly to the west, within which an intense pattern of agricultural subdivision has taken place, and a corresponding hierarchical nodal pattern of settlement ranging from regional centres to villages to farm werfs that has developed in response to water resources, topography and movement routes.*”

According to Hart and Finnegan (2008, SAHRIS NID 8488), “ *The study area lies in the Swartland - a broad rural expanse of low rolling hills interspersed with farms, small communities and towns. Before the advent of wheat farming, the Swartland was characterised by "Renosterveld" plant communities which gave the area a dark-grey olive-green appearance when viewed from afar - hence the name Swartland (black country). The underlying geology which consists of schists and shales of the Malmesbury Group is considered to be good agricultural land, the shale being rich in trace elements, which before the advent of agriculture supported large quantities of game. The Berg River alluvial terraces contain copious quantities of Early and Middle Stone Age artefacts attesting to the occupation of this landscape by humans for a million years or more. Today, the Swartland is one of the most*

² Swartland Heritage Survey (2014), <https://sahris.sahra.org.za/sites/default/files/heritagereports/Swartland%20Overview%20Report%20Sept%202014.pdf>

³ Cape West Coast Biosphere Reserve About, https://cwcb.co.za/?page_id=974

⁴ Patricia Holmes (2008), Optimal ground preparation treatments for restoring lowland Sand Fynbos vegetation on old fields, https://www.researchgate.net/figure/Monthly-rainfall-at-Riverlands-Nature-Reserve-during-the-trial-Average-annual-rainfall_fig1_238383031



CTS HERITAGE

important wheat-producing areas of the nation. Almost every farmer is involved in the cultivation of wheat which has given the entire area its particular character and texture.”

The area under investigation is currently cultivated and has been under cultivation since the late 19th Century at least (Figure 3.2). Three significant farm werfs have been identified by Pentz in the Swartland Rural Heritage Survey (2014). These structures are graded IIIB and are located on the far side of the N7 from the proposed development. There is a clear relationship between the location of the farm werfs and the Diepriver. The proposed development falls on the far side of the N7 from these significant structures, further than 500m away from graded werfs, and as such, impact to these graded heritage resources is unlikely.

The Swartland Rural Heritage Survey (Pentz, 2014) also identifies a number of kinds of landscapes within the broader area that have significance including:

- The pristine natural landscape refers to the natural mountain backdrops provided by Paardeberg, Kasteelberg, Porseleinberg and Groot Winterberg. It also applies to areas possessing important vegetation types, namely Swartland Alluvium Fynbos, Swartland Alluvium Renosterveld and Sand Plain Fynbos.
- The fossil landscape associated with the palaeontologically sensitive Langebaanweg Formation located towards the coastline (not located within or near the development area)
- Traditional Hunting and Grazing grounds associated with the number of Middle and Later Stone Age artefacts found across the landscape
- A landscape of historical routes including the N7 which links the regional centres of Cape Town, Malmesbury, Moorreesburg and Pietberg and which has its origins in the 19th-century route to the interior. From the historical Topo map (1939), it seems that this part of the N7 does not align with the historic route alignment which runs east of Abbotsdale (Figure 3.4).
- An agricultural productive landscape associated with some of the earliest loan farms in the region dating to the 18th century, e.g. Hoogelegen c1709 near Koringberg. The particular soil patterns, climate and hydrology have given rise to a mosaic of cultivated farmlands, most notably in the form of extensive wheatfields
- A landscape of slavery historically associated with the 1808 slave and Khoi rebellion and the freedom march to Cape Town which started from the farm Vogelgezang located to the north of Malmesbury.
- A landscape of religion with many of the significant towns in the area established as church towns
- A landscape of water whereby watercourses determined the location and orientation of outspans and farm werfs, as well as the layout and growth patterns of villages
- A landscape of conflict in which indigenous tribes were displaced from their traditional grazing lands and hunting grounds
- A landscape of displacement through colonial expansion, the relocation of farm labour into mission settlements during the mid-19th century, and the displacement of people under Group Areas during apartheid
- A scenic landscape resulting from a combination of broad expansive views across flat coastal plain and undulating foothills, threshold conditions between landscapes, views towards distinctive topographical features such as the Perdeberg, Porseleinberg and Kasteelberg and distant views towards the Cape Fold Mountain
- Historic townscapes including Abbotsdale (c1856)

While the broader landscape within which the development is proposed is considered to have heritage significance, none of the elements outlined above are likely to be directly impacted by the proposed development other than the historic N7 alignment and the historic townscape of Abbotsdale.

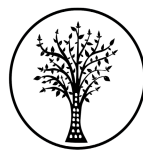
Archaeology

According to Hart and Finnegan (2008 SAHRIS ID 8488) “Previous experience has shown that pre-colonial archaeological material is relatively limited in Swartland as the shale bedrock offers very poor quality material for making stone artefacts. Early and Middle Stone Age finds are *plentiful along the banks of the Berg River where alluvial quartzites are to be found*, but decrease with distance from the river. It is highly possible that pre-colonial archaeology ranging from Late to Early Stone Age is present in the study area, however, years of ploughing has destroyed its context and diminished the scientific value of any such material.” In an assessment completed by Deacon approximately 10km southwest of the proposed development (2001, SAHRIS NID 4439), Deacon notes that “*The absence of any surface finds suggests the cover sands are sterile. Below this surficial cover at greater depth, there is a possibility that cultural horizons could be intersected. The risk is considered low because the service trenches have revealed nothing significant and the type of development does*

CTS Heritage

238 Queens Road, Simons Town

Email: info@ctsheritage.com Web: www.ctsheritage.com



CTS HERITAGE

not involve large earthmoving. The significance is considered to be low.” This finding is reiterated in an assessment completed by Kaplan (2001, SAHRIS ID 4414) who concludes that the overall archaeological sensitivity of this area is low. In his assessment, Kaplan (2001) identified a few Early Stone Age flakes in an old agricultural field, however these were determined to be Not Conservation-Worthy.

In another nearby AIA by Deacon (2007, SAHRIS NID 3926), located approximately 7km southeast, no archaeological materials were documented, due to excessive sand mining. The area was given a low significance grade. In 2006, Kaplan conducted an AIA located approximately 5km in a southeastern direction from the proposed development (SAHRIS NID 4405). He noted several low-density scatters, including LSA lithics and Cape Coastal Pottery. He also noted two ESA flakes and one core. It is from this assessment, that the two Heritage Resources in Figure 3.1 come from. OHK 1 is a low-density LSA Scatter including *“five unmodified flakes, one large utilized flake, one utilized blade, and one small irregular core, all in white silcrete. One quartz irregular core and three quartz flakes were also counted. The quartz is locally available, but the source of the silcrete is unknown.”* OHK 2 is also a low-density LSA scatter, *“Most of the artefacts are in locally available quartz and include more than 30 unmodified flakes, chips and chunks. One utilized flake, one (possible) snapped thumbnail scraper, one bipolar core, one worked-out bipolar core and one irregular core (all in quartz) were also counted. In addition to the above finds, one large quartzite flake, three silcrete flakes, two silcrete chunks and two hornfels flakes were found. Several small pieces of red hematite were also noted.”* OHK 2 was found on a slight rise, alongside remnant dunes. These Heritage resources are unlikely to be impacted as the proposed development is about 5km away, but provide insight as to what can be expected in the proposed area. Kaplan recommended the collection of the two LSA scatters as mitigation.

Based on the known archaeological sensitivity of the broader area, the likelihood of significant archaeological heritage being impacted by the proposed development is low and no further archaeological assessment is recommended

Palaeontology

According to the SAHRIS Palaeosensitivity Map (Figure 4), the area proposed for development is underlain by geological sediments of low sensitivity for impacts to palaeontology. The geology of this area consists predominantly of light-grey to red sandy soil, and loam and sandy loam, which all have low palaeontological sensitivity. A part of the proposed area is also underlain by Ferricrete which has zero palaeontological sensitivity

In a relevant assessment completed by Almond (2011, SAHRIS NID 8915) for a fibre-optic cable *“Heading north eastwards along the N7 between Cape Town and Malmesbury... the data cable route crosses the west coastal plain (Cape Town sheet). The low-elevation plain here is incised into basement metasediments of the Malmesbury Group intruded by granites of the Darling and Paardeberg plutons, with isolated remnants of a narrow, down-faulted graben infill of the molassic Klipheuwel Group (Magrug and Populierbos Formations) southwest of Kalbaskraal. **None of these older, pre-Caenozoic rock successions is palaeontologically sensitive.** A substantial portion of the west coast route is blanketed by Pleistocene to Holocene aeolianites (Springfontein Formation) and various soils.*

Based on the known palaeontological sensitivity of the area, the likelihood of significant palaeontological heritage being impacted by the proposed development is low.

RECOMMENDATION

Based on the available information, while it is not likely that the proposed development will impact on significant archaeological and palaeontological heritage resources, the proposed development may impact on the historic N7 and the adjacent historic town of Abbotsdale and as such, it is recommended that this impact is assessed in a heritage impact assessment.

CTS Heritage

238 Queens Road, Simons Town

Email: info@ctsheritage.com Web: www.ctsheritage.com



CTS HERITAGE

APPENDIX 1

List of heritage resources within the 20km Inclusion Zone from SAHRIS

Site ID	Site no	Full Site Name	Site Type	Grading
OHK1	Olyvenhoek 1	Artefacts	34056	Grade IIIc
OHK2	Olyvenhoek 2	Artefacts	34057	Grade IIIc

CTS Heritage

238 Queens Road, Simons Town

Email: info@ctsheritage.com Web: www.ctsheritage.com



CTS HERITAGE

APPENDIX 2

Reference List from SAHRIS

Heritage Impact Assessments				
Nid	Report Type	Author/s	Date	Title
3926	AIA Phase 1	Hilary Deacon	13/07/2007	Archaeological Impact Assessment: St Dicks Aeroport.
4405	AIA Phase 1	Jonathan Kaplan	01/12/2006	Phase 1 Archaeological Impact Assessment: Proposed Development Schoonspruit Country Estate Portion of Erf 317, Portion of Erf 7455 & Erf 882, Malmesbury, Western Cape Province
4407	AIA Phase 1	Jonathan Kaplan	15/06/2007	Phase 1 Archaeological Impact Assessment: Proposed Development Precinct 2, 3, 4, 5 & 6 Malmesbury, Western Cape Province: Portion of Erf 317, a Portion of Erf 7455, a Portion of Farm Oranje Fontein 1113, Portion of Farm 771 Rozenburg, Portion of Portion 1
4414	AIA Phase 1	Jonathan Kaplan	03/12/2001	Contract No. C683: Poverty Alleviation Project P04-009-00/1: Kalbaskraal and Chatsworth/Riverlands Access Roads Appointment as Heritage Specialist for Environmental Enterg
4416	AIA Phase 1	Jonathan Kaplan	11/02/2005	Phase 1 Proposed Development of a Portion of Farm 688 Malmesbury Western Cape Province
4422	AIA Phase 1	Jonathan Kaplan	01/08/2006	Phase 1 Archaeological Impact Assessment Proposed Sand Mining on a Part of the Farm Olyvenhoek 818, Remainder Malmesbury, Western Cape Province
4439	AIA Phase 1	Hilary Deacon	15/06/2007	Archaeological Impact Assessment: Chatsworth Low Cost Housing Development (Erf No 2-132 West Coast District Municipality, Western Cape)
6499	AIA Phase 1	Dave Halkett	01/03/1995	Report on the Phase One Archaeological Investigation of Aspects of the Site Known as Die Bron in Malmesbury
6600	AIA Phase 1	Jonathan Kaplan	18/05/2008	Phase 1 Archaeological Impact Assessment: Proposed Elsana Quarry (Farm No. 701 Lange Kloof) Malmesbury, Western Cape Province
6770	AIA Phase 1	Jonathan Kaplan	01/01/2007	Phase 1 Archaeological Impact Assessment for a Proposed Housing Development on Portion 2 of Farm 690 and Remainder of the Farm Klipfontein 688 (Glen Lily) Malmesbury, Western Cape Province
6777	AIA Desktop	Harriet Clift, Lita Webley	08/03/2011	Heritage Scoping report with preliminary impact assessments Fibre optic data cable: Graaff-Reinet to Yzerfontein

CTS Heritage

238 Queens Road, Simons Town

Email: info@ctsheritage.com Web: www.ctsheritage.com



CTS HERITAGE

7276	AIA Phase 1	Hilary Deacon	17/12/2008	Archaeological and Heritage Impact Assessment: Diep and Platteklip River Clearing Project (Malmesbury)
7403	AIA Phase 1	Hilary Deacon	17/12/2008	Archaeological and Heritage Impact Assessment: No Go River Clearing Project (Moorreesberg)
8109	AIA Phase 1	Jonathan Kaplan	01/10/2008	Phase 1 Archaeological Impact Assessment the Proposed Swartland Shopping Mall Remainder Farm Tweefontein No. 696, Erf 2654 (Portion of Erf 327), Erf 9215 (Portion of Erf 2654) & Portion of Erf 327 Malmesbury
8915	PIA Phase 1	John E Almond	08/04/2011	FibreCO Data Cable Project: Route 3 from Graaff-Reinet via George and Cape Town to Yzerfontein, Western and Eastern Cape Provinces
325496	Heritage Impact Assessment Specialist Reports	Dr J de Jongh	08/03/2015	SPECIALIST STUDY: HERITAGE IMPACT ASSESSMENT FOR THE INSTALLATION OF THE SIRIUS FIBRE OPTIC CABLE BETWEEN JOHANNESBURG AND YZERFONTEIN, GAUTENG, FREE STATE, EASTERN AND WESTERN CAPE PROVINCES
384337	AIA Phase 1	Jenna Lavin, Kyla Bluff	01/11/2016	SPECIALIST ARCHAEOLOGICAL ASSESSMENT: PROPOSED EXTENSION OF AN EXISTING GRANITE QUARRY, Portion 1 of Farm 814 and Remainder Farm 830, Malmesbury
384338	HIA Phase 1	Kyla Bluff	01/11/2016	HERITAGE IMPACT ASSESSMENT: PROPOSED EXTENSION OF AN EXISTING GRANITE QUARRY, Portion 1 of Farm 814 and Remainder Farm 830, Malmesbury

Additional References

Report Type	Authors	Date	Title
Heritage Survey	André Pentz	30/09/2014	Swartland Rural Heritage Survey: Wards 1, 3, 4, 5, 6, 7 & 12, Overview Report

CTS Heritage

238 Queens Road, Simons Town

Email: info@ctsheritage.com Web: www.ctsheritage.com



CTS HERITAGE

APPENDIX 3 - Keys/Guides

Key/Guide to Acronyms

AIA	Archaeological Impact Assessment
DARD	Department of Agriculture and Rural Development (KwaZulu-Natal)
DEA	Department of Environmental Affairs (National)
DEADP	Department of Environmental Affairs and Development Planning (Western Cape)
DEDEAT	Department of Economic Development, Environmental Affairs and Tourism (Eastern Cape)
DEDECT	Department of Economic Development, Environment, Conservation and Tourism (North West)
DEDT	Department of Economic Development and Tourism (Mpumalanga)
DEDTEA	Department of economic Development, Tourism and Environmental Affairs (Free State)
DENC	Department of Environment and Nature Conservation (Northern Cape)
DMR	Department of Mineral Resources (National)
GDARD	Gauteng Department of Agriculture and Rural Development (Gauteng)
HIA	Heritage Impact Assessment
LEDET	Department of Economic Development, Environment and Tourism (Limpopo)
MPRDA	Mineral and Petroleum Resources Development Act, no 28 of 2002
NEMA	National Environmental Management Act, no 107 of 1998
NHRA	National Heritage Resources Act, no 25 of 1999
PIA	Palaeontological Impact Assessment
SAHRA	South African Heritage Resources Agency
SAHRIS	South African Heritage Resources Information System
VIA	Visual Impact Assessment

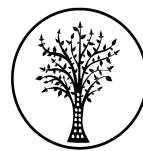
Full guide to Palaeosensitivity Map legend

	RED:	VERY HIGH - field assessment and protocol for finds is required
	ORANGE/YELLOW:	HIGH - desktop study is required and based on the outcome of the desktop study, a field assessment is likely
	GREEN:	MODERATE - desktop study is required
	BLUE/PURPLE:	LOW - no palaeontological studies are required however a protocol for chance finds is required
	GREY:	INSIGNIFICANT/ZERO - no palaeontological studies are required
	WHITE/CLEAR:	UNKNOWN - these areas will require a minimum of a desktop study.

CTS Heritage

238 Queens Road, Simons Town

Email: info@ctsheritage.com Web: www.ctsheritage.com



CTS HERITAGE

APPENDIX 4 - Methodology

The Heritage Screener summarises the heritage impact assessments and studies previously undertaken within the area of the proposed development and its surroundings. Heritage resources identified in these reports are assessed by our team during the screening process.

The heritage resources will be described both in terms of **type**:

- Group 1: Archaeological, Underwater, Palaeontological and Geological sites, Meteorites, and Battlefields
- Group 2: Structures, Monuments and Memorials
- Group 3: Burial Grounds and Graves, Living Heritage, Sacred and Natural sites
- Group 4: Cultural Landscapes, Conservation Areas and Scenic routes

and **significance** (Grade I, II, IIIa, b or c, ungraded), as determined by the author of the original heritage impact assessment report or by formal grading and/or protection by the heritage authorities.

Sites identified and mapped during research projects will also be considered.

DETERMINATION OF THE EXTENT OF THE INCLUSION ZONE TO BE TAKEN INTO CONSIDERATION

The extent of the inclusion zone to be considered for the Heritage Screener will be determined by CTS based on:

- the size of the development,
- the number and outcome of previous surveys existing in the area
- the potential cumulative impact of the application.

The inclusion zone will be considered as the region within a maximum distance of 50 km from the boundary of the proposed development.

DETERMINATION OF THE PALAEOLOGICAL SENSITIVITY

The possible impact of the proposed development on palaeontological resources is gauged by:

- reviewing the fossil sensitivity maps available on the South African Heritage Resources Information System (SAHRIS)
- considering the nature of the proposed development
- when available, taking information provided by the applicant related to the geological background of the area into account

DETERMINATION OF THE COVERAGE RATING ASCRIBED TO A REPORT POLYGON

Each report assessed for the compilation of the Heritage Screener is colour-coded according to the level of coverage accomplished. The extent of the surveyed coverage is labeled in three categories, namely low, medium and high. In most instances the extent of the map corresponds to the extent of the development for which the specific report was undertaken.

CTS Heritage

238 Queens Road, Simons Town

Email: info@ctsheritage.com Web: www.ctsheritage.com



CTS HERITAGE

Low coverage will be used for:

- desktop studies where no field assessment of the area was undertaken;
- reports where the sites are listed and described but no GPS coordinates were provided.
- older reports with GPS coordinates with low accuracy ratings;
- reports where the entire property was mapped, but only a small/limited area was surveyed.
- uploads on the National Inventory which are not properly mapped.

Medium coverage will be used for

- reports for which a field survey was undertaken but the area was not extensively covered. This may apply to instances where some impediments did not allow for full coverage such as thick vegetation, etc.
- reports for which the entire property was mapped, but only a specific area was surveyed thoroughly. This is differentiated from low ratings listed above when these surveys cover up to around 50% of the property.

High coverage will be used for

- reports where the area highlighted in the map was extensively surveyed as shown by the GPS track coordinates. This category will also apply to permit reports.

RECOMMENDATION GUIDE

The Heritage Screener includes a set of recommendations to the applicant based on whether an impact on heritage resources is anticipated. One of three possible recommendations is formulated:

(1) The heritage resources in the area proposed for development are sufficiently recorded - The surveys undertaken in the area adequately captured the heritage resources. There are no known sites which require mitigation or management plans. No further heritage work is recommended for the proposed development.

This recommendation is made when:

- enough work has been undertaken in the area
- it is the professional opinion of CTS that the area has already been assessed adequately from a heritage perspective for the type of development proposed

(2) The heritage resources and the area proposed for development are only partially recorded - The surveys undertaken in the area have not adequately captured the heritage resources and/or there are sites which require mitigation or management plans. Further specific heritage work is recommended for the proposed development.

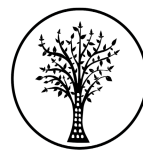
This recommendation is made in instances in which there are already some studies undertaken in the area and/or in the adjacent area for the proposed development. Further studies in a limited HIA may include:

- improvement on some components of the heritage assessments already undertaken, for instance with a renewed field survey and/or with a specific specialist for the type of heritage resources expected in the area
- compilation of a report for a component of a heritage impact assessment not already undertaken in the area

CTS Heritage

238 Queens Road, Simons Town

Email: info@ctsheritage.com Web: www.ctsheritage.com



CTS HERITAGE

- undertaking mitigation measures requested in previous assessments/records of decision.

(3) The heritage resources within the area proposed for the development have not been adequately surveyed yet - Few or no surveys have been undertaken in the area proposed for development. A full Heritage Impact Assessment with a detailed field component is recommended for the proposed development.

Note:

The responsibility for generating a response detailing the requirements for the development lies with the heritage authority. However, since the methodology utilised for the compilation of the Heritage Screeners is thorough and consistent, contradictory outcomes to the recommendations made by CTS should rarely occur. Should a discrepancy arise, CTS will immediately take up the matter with the heritage authority to clarify the dispute.

CTS Heritage

238 Queens Road, Simons Town

Email: info@ctsheritage.com Web: www.ctsheritage.com