

Nuwerus Housing Development on Erven 182 and 184

Electrical Engineering Services Report

January 2025

Prepared for :

Asla Devco
PO Box 118
Gordons Bay
7151

Belinda Munsamy-Swartland



Prepared by :

Neil Lyners & Associates (Pty) Ltd
P.O. Box 4901

Tygervalley
7536

Theo Potgieter
theo@lynerns.co.za

REPORT DETAILS:

Lyners Reference No: 23164E
Client: Asla Devco
Report prepared by: Theo Potgieter
Client representative: Belinda Munsamy-Swartland
Keywords: Nuwerus, Electrical Engineering Services Report

Revision record and date:

Date	Revision	Format	Issued to:
24 January 2025	0	PDF	Belinda Munsamy-Swartland

Disclaimer, Confidentiality and Copyright:

This report was prepared for the Client based on information obtained from Asla Devco, Urban Dynamics and Matzikama Municipality.

Lyners, its members and staff accept no responsibility for:

- Correctness of the information provided.
- Any matters outside the agreed scope of work.

The content of this report is confidential. Any third party who uses or considers any information, calculations or statement in this report does so at their own risk.

Copyright of this report rests with Lyners, unless otherwise agreed to in writing and no part of this report may be reproduced copied or transmitted in any form or by any means whatsoever to any person without written permission by the copyright holder.

Nuwerus Housing Development on Erven 182 and 184 Electrical Engineering Services Report

CONTENTS

Chapter	Description	Page
1	<i>INTRODUCTION</i>	1
2	<i>SITE LOCATION</i>	1
3	<i>Details of the development</i>	2
4	<i>ELECTRICAL LOAD ESTIMATE</i>	2
5	<i>EXISTING ELECTRICAL SERVICES</i>	2
6	<i>ELECTRICITY SERVICES DETAILS</i>	3
7	<i>CONCLUSION</i>	3

1 INTRODUCTION

Neil Lyners and Associates (Pty) Ltd (“Lyners”) was requested to compile an Electrical Engineering Services Report for the planned housing development in Nuwerus on erven 182 and 184.

This report investigates the preliminary electrical load requirements, supply capacity and upgrade details.

2 SITE LOCATION

The development will be implemented in Nuwerus as an extension of the existing housing area. Access to the development will be from the existing developments adjacent to this new phase.



Figure 1 – Location of development

3 DETAILS OF THE DEVELOPMENT

The proposal is for a low-cost housing area based on 91 housing sites.

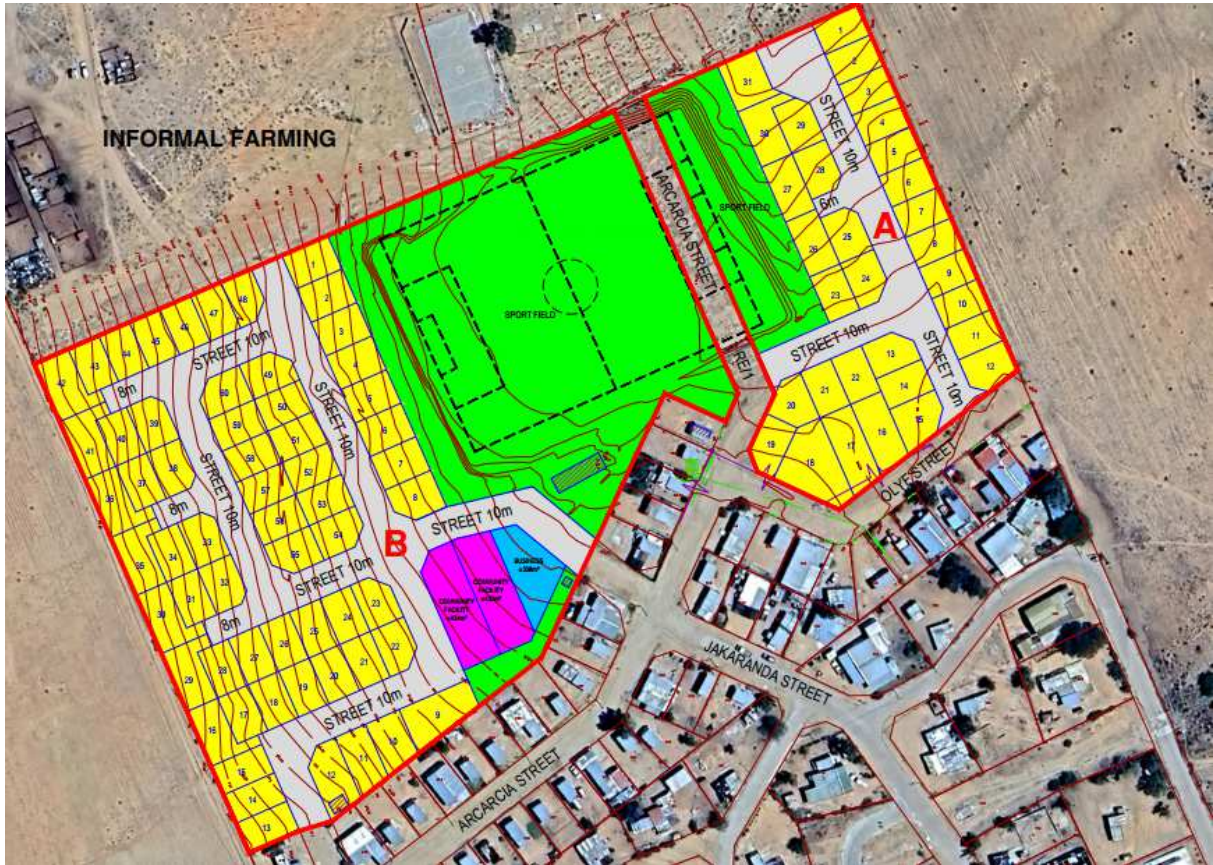


Figure 2 – Details of the development

4 ELECTRICAL LOAD ESTIMATE

The anticipated electrical load for this total development consisting of 91 housing units is **180kVA**.

5 EXISTING ELECTRICAL SERVICES

The specific area to be developed falls into the electricity supply area of Matzikama Municipality, and bulk services will therefore be provided from the nearest municipal network with adequate capacity.

An existing municipal 22kV overhead line south-east of the proposed development in Angelier Road does currently have capacity for the estimated additional load of 180kVA. A new 22kV connection to the proposed development will be fed from this line.

The Notified Maximum Demand (NMD) with Eskom might have to be increased, which will be done by the municipality at a later stage if necessary.

6 ELECTRICITY SERVICES DETAILS

As previously mentioned, the development will be fed from the existing 22kV overhead line in Angelier Road, south-east of the development. The 22kV overhead line will be extended and a new 200kVA pole mounted transformer installed. Low voltage distribution and house connections will be via overhead lines in the development.

All designs, material and equipment to be used as well as installation practices will be based on the guidelines for new electricity networks as dictated by Matzikama Municipality.

All completed networks will be handed over to Matzikama Municipality once completed, who will then be responsible for the operation and maintenance thereof.

7 CONCLUSION

Lyners have investigated the proposed development opportunity and are satisfied that there are no electrical supply constraints in terms of available capacity and that the site is suitable for the intended development from an electrical engineering point of view.