

**SCREENING REPORT FOR AN ENVIRONMENTAL AUTHORIZATION AS  
REQUIRED BY THE 2014 EIA REGULATIONS – PROPOSED SITE  
ENVIRONMENTAL SENSITIVITY**

**EIA Reference number:** None- No reference number on NOI

**Project name:** THE PROPOSED VEGETATION CLEARING OF VEGETATION ON REMAINDER OF FARM  
SCHALKENBOSCH 229, TULBAGH.

**Project title:** THE PROPOSED VEGETATION CLEARING OF VEGETATION ON REMAINDER OF FARM  
SCHALKENBOSCH 229, TULBAGH.

**Date screening report generated:** 07/02/2026 11:00:59

**Applicant:** Die Karla en Anke Trust

**Compiler:** Nicolaas W Hanekom

**Compiler signature:**

*NWH*

.....

**Application Category:** Transformation of land|Indigenous vegetation

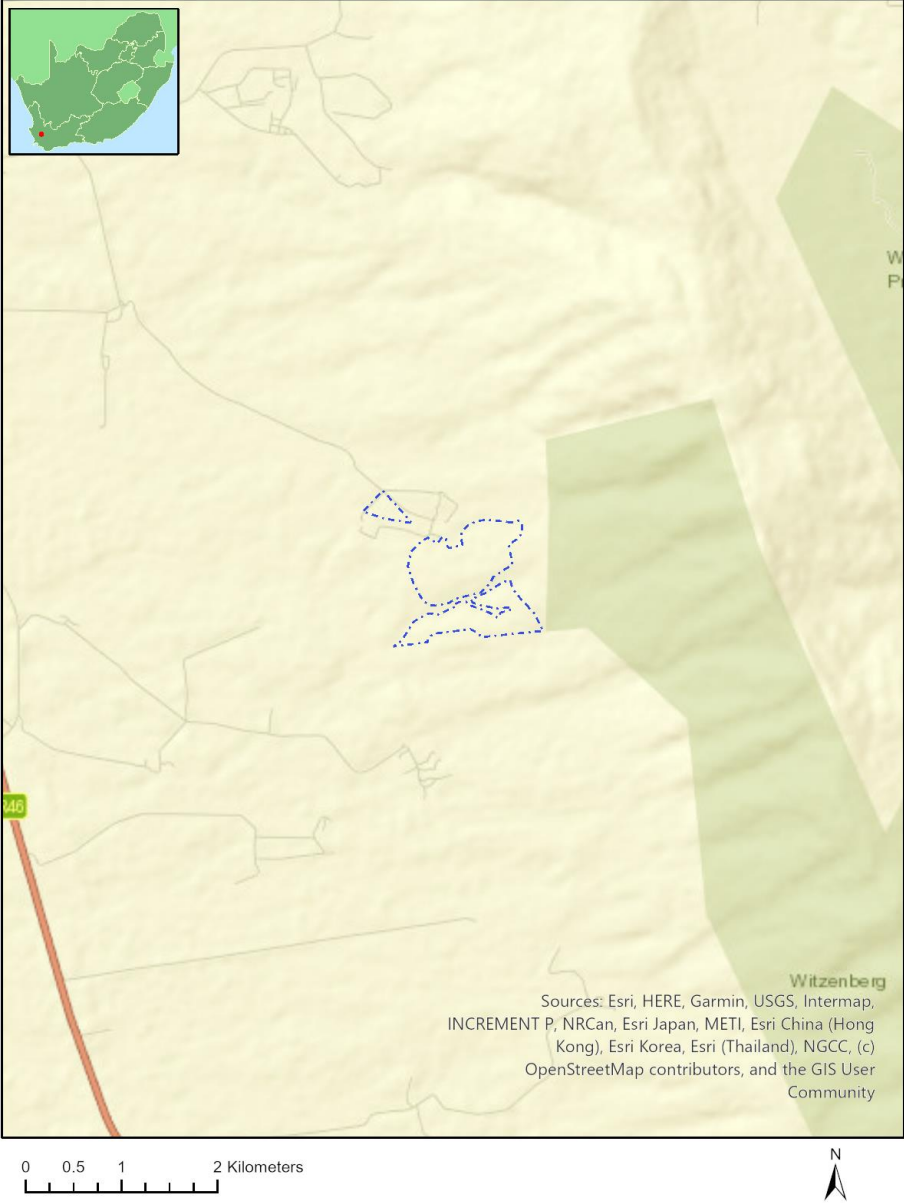
## Table of Contents

Proposed Project Location .....	3
Orientation map 1: General location .....	3
Map of proposed site and relevant area(s) .....	4
Cadastral details of the proposed site .....	4
Wind and Solar developments with an approved Environmental Authorisation or applications under consideration within 30 km of the proposed area .....	4
Environmental Management Frameworks relevant to the application .....	5
Environmental screening results and assessment outcomes .....	5
Relevant development incentives, restrictions, exclusions or prohibitions .....	5
Proposed Development Area Environmental Sensitivity .....	5
Specialist assessments identified .....	6
Results of the environmental sensitivity of the proposed area .....	7
MAP OF RELATIVE AGRICULTURE THEME SENSITIVITY .....	7
MAP OF RELATIVE ANIMAL SPECIES THEME SENSITIVITY .....	8
MAP OF RELATIVE AQUATIC BIODIVERSITY THEME SENSITIVITY .....	9
MAP OF RELATIVE ARCHAEOLOGICAL AND CULTURAL HERITAGE THEME SENSITIVITY .....	10
MAP OF RELATIVE CIVIL AVIATION THEME SENSITIVITY .....	11
MAP OF RELATIVE DEFENCE THEME SENSITIVITY .....	12
MAP OF RELATIVE PALEONTOLOGY THEME SENSITIVITY .....	13
MAP OF RELATIVE PLANT SPECIES THEME SENSITIVITY .....	14
MAP OF RELATIVE TERRESTRIAL BIODIVERSITY THEME SENSITIVITY .....	17

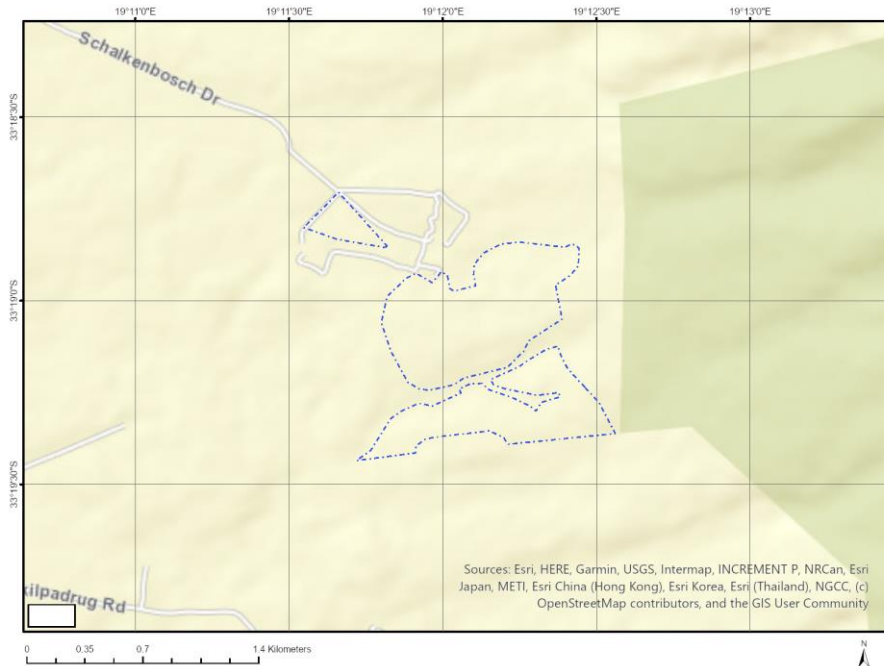
# Proposed Project Location

## Orientation map 1: General location

**General Orientation: THE PROPOSED VEGETATION CLEARING OF VEGETATION ON REMAINDER OF FARM SCHALKENBOSCH 229, TULBAGH.**



## Map of proposed site and relevant area(s)



## Cadastral details of the proposed site

Property details:

No	Farm Name	Farm/ Erf No	Portion	Latitude	Longitude	Property Type
1	EIKELANING	235	0	33°19'46.78S	19°11'10.88E	Farm
2	SCHALKENBOSCH	468	0	33°18'31.51S	19°12'4.67E	Farm
3	SCHALKENBOSCH	229	0	33°19'4.71S	19°11'54.69E	Farm
4	SCHALKENBOSCH	229	0	33°19'7.7S	19°11'54.82E	Farm Portion
5	SCHALKENBOSCH	229	3	33°18'40.72S	19°12'9.9E	Farm Portion
6	EIKELANING	235	0	33°19'43.86S	19°10'36.99E	Farm Portion
7	SCHALKENBOSCH	468	0	33°18'27.75S	19°12'5.5E	Farm Portion

Development footprint<sup>1</sup> vertices:  
No development footprint(s) specified.

## Wind and Solar developments with an approved Environmental Authorisation or applications under consideration within 30 km of the proposed area

No	EIA Reference No	Classification	Status of	Distance from proposed
----	------------------	----------------	-----------	------------------------

<sup>1</sup> "development footprint", means the area within the site on which the development will take place and includes all ancillary developments for example roads, power lines, boundary walls, paving etc. which require vegetation clearance or which will be disturbed and for which the application has been submitted.

			<b>application</b>	<b>area (km)</b>
1	12/12/20/2394/AM1	Solar PV	Approved	8.7
2	12/12/20/1859	Wind	Approved	12.1
3	14/12/16/3/3/1/2407	Wind	Approved	18.2
4	14/12/16/3/3/2/322/AM2	Wind	Approved	16.3
5	12/12/20/1859/AM3	Wind	Approved	12.1
6	14/12/16/3/3/322	Wind	Approved	16.3
7	12/12/20/2227	Wind	Approved	17.6
8	12/12/20/2394	Solar PV	Approved	8.7
9	14/12/16/3/3/2/322	Wind	Approved	16.3
10	14/12/16/3/3/2/2501	Solar PV	Approved	14.8
11	12/12/20/2400	Solar PV	Approved	26.5
12	12/12/20/2400/AM2	Solar PV	Approved	26.5
13	14/12/16/3/3/1/2615	Wind	Approved	18.2
14	14/12/16/3/3/2/2105	Wind	Approved	17.6

## Environmental Management Frameworks relevant to the application

No intersections with EMF areas found.

## Environmental screening results and assessment outcomes

The following sections contain a summary of any development incentives, restrictions, exclusions or prohibitions that apply to the proposed development site as well as the most environmental sensitive features on the site based on the site sensitivity screening results for the application classification that was selected. The application classification selected for this report is:

**Transformation of land | Indigenous vegetation.**

### Relevant development incentives, restrictions, exclusions or prohibitions

The following development incentives, restrictions, exclusions or prohibitions and their implications that apply to this site are indicated below.

<b>Incentive, restriction or prohibition</b>	<b>Implication</b>
Strategic Transmission Corridor-Central corridor	<a href="https://screening.environment.gov.za/ScreeningDownloads/DevelopmentZones/Combined_EGI.pdf">https://screening.environment.gov.za/ScreeningDownloads/DevelopmentZones/Combined_EGI.pdf</a>
Strategic Gas Pipeline Corridors-Phase 1a & 1b: Saldanha to Ankerlig and Saldanha to Mossel Bay	<a href="https://screening.environment.gov.za/ScreeningDownloads/DevelopmentZones/Combined_GAS.pdf">https://screening.environment.gov.za/ScreeningDownloads/DevelopmentZones/Combined_GAS.pdf</a>

### Proposed Development Area Environmental Sensitivity

The following summary of the development site environmental sensitivities is identified. Only the highest environmental sensitivity is indicated. The footprint environmental sensitivities for the proposed development footprint as identified, are indicative only and must be verified on site by a suitably qualified person before the specialist assessments identified below can be confirmed.

Theme	Very High sensitivity	High sensitivity	Medium sensitivity	Low sensitivity
Agriculture Theme	X			
Animal Species Theme			X	
Aquatic Biodiversity Theme	X			
Archaeological and Cultural Heritage Theme				X
Civil Aviation Theme				X
Defence Theme				X
Paleontology Theme			X	
Plant Species Theme			X	
Terrestrial Biodiversity Theme	X			

### Specialist assessments identified

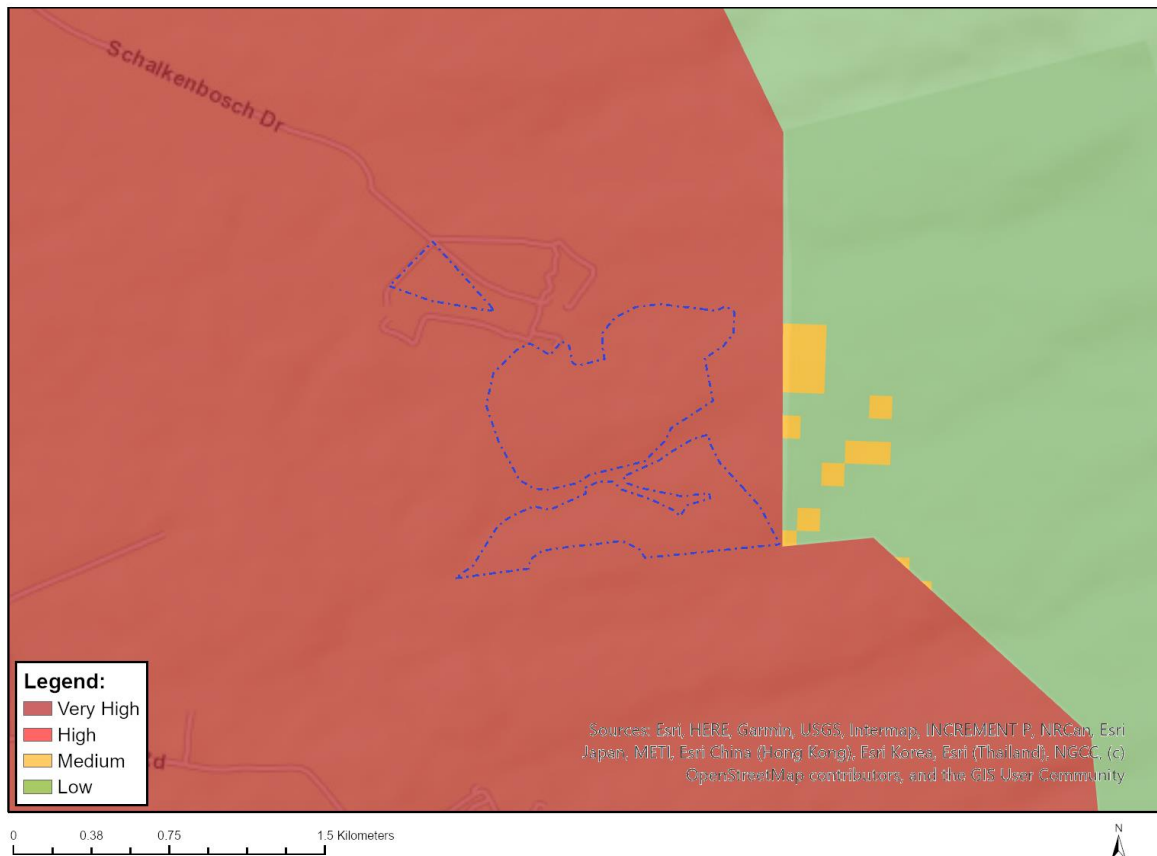
Based on the selected classification, and the known impacts associated with the proposed development, the following list of specialist assessments have been identified for inclusion in the assessment report. It is the responsibility of the EAP to confirm this list and to motivate in the assessment report, the reason for not including any of the identified specialist study including the provision of photographic evidence of the site situation.

No	Specialist assessment	Assessment Protocol
1	Landscape/Visual Impact Assessment	<a href="https://screening.environment.gov.za/ScreeningDownloads/AssessmentProtocols/Gazetted_General_Requirement_Assessment_Protocols.pdf">https://screening.environment.gov.za/ScreeningDownloads/AssessmentProtocols/Gazetted_General_Requirement_Assessment_Protocols.pdf</a>
2	Archaeological and Cultural Heritage Impact Assessment	<a href="https://screening.environment.gov.za/ScreeningDownloads/AssessmentProtocols/GuidanceforHIA.pdf">https://screening.environment.gov.za/ScreeningDownloads/AssessmentProtocols/GuidanceforHIA.pdf</a>
3	Palaeontology Impact Assessment	<a href="https://screening.environment.gov.za/ScreeningDownloads/AssessmentProtocols/GuidanceforPIA.pdf">https://screening.environment.gov.za/ScreeningDownloads/AssessmentProtocols/GuidanceforPIA.pdf</a>
4	Terrestrial Biodiversity Impact Assessment	<a href="https://screening.environment.gov.za/ScreeningDownloads/AssessmentProtocols/Gazetted_Terrestrial_Biodiversity_Assessment_Protocols.pdf">https://screening.environment.gov.za/ScreeningDownloads/AssessmentProtocols/Gazetted_Terrestrial_Biodiversity_Assessment_Protocols.pdf</a>
5	Aquatic Biodiversity Impact Assessment	<a href="https://screening.environment.gov.za/ScreeningDownloads/AssessmentProtocols/Gazetted_Aquatic_Biodiversity_Assessment_Protocols.pdf">https://screening.environment.gov.za/ScreeningDownloads/AssessmentProtocols/Gazetted_Aquatic_Biodiversity_Assessment_Protocols.pdf</a>
6	Socio-Economic Assessment	<a href="https://screening.environment.gov.za/ScreeningDownloads/AssessmentProtocols/Gazetted_General_Requirement_Assessment_Protocols.pdf">https://screening.environment.gov.za/ScreeningDownloads/AssessmentProtocols/Gazetted_General_Requirement_Assessment_Protocols.pdf</a>
7	Plant Species Assessment	<a href="https://screening.environment.gov.za/ScreeningDownloads/AssessmentProtocols/Gazetted_Plant_Species_Assessment_Protocols.pdf">https://screening.environment.gov.za/ScreeningDownloads/AssessmentProtocols/Gazetted_Plant_Species_Assessment_Protocols.pdf</a>
8	Animal Species Assessment	<a href="https://screening.environment.gov.za/ScreeningDownloads/AssessmentProtocols/Gazetted_Animal_Species_Assessment_Protocols.pdf">https://screening.environment.gov.za/ScreeningDownloads/AssessmentProtocols/Gazetted_Animal_Species_Assessment_Protocols.pdf</a>

## Results of the environmental sensitivity of the proposed area.

The following section represents the results of the screening for environmental sensitivity of the proposed site for relevant environmental themes associated with the project classification. It is the duty of the EAP to ensure that the environmental themes provided by the screening tool are comprehensive and complete for the project. Refer to the disclaimer.

### MAP OF RELATIVE AGRICULTURE THEME SENSITIVITY

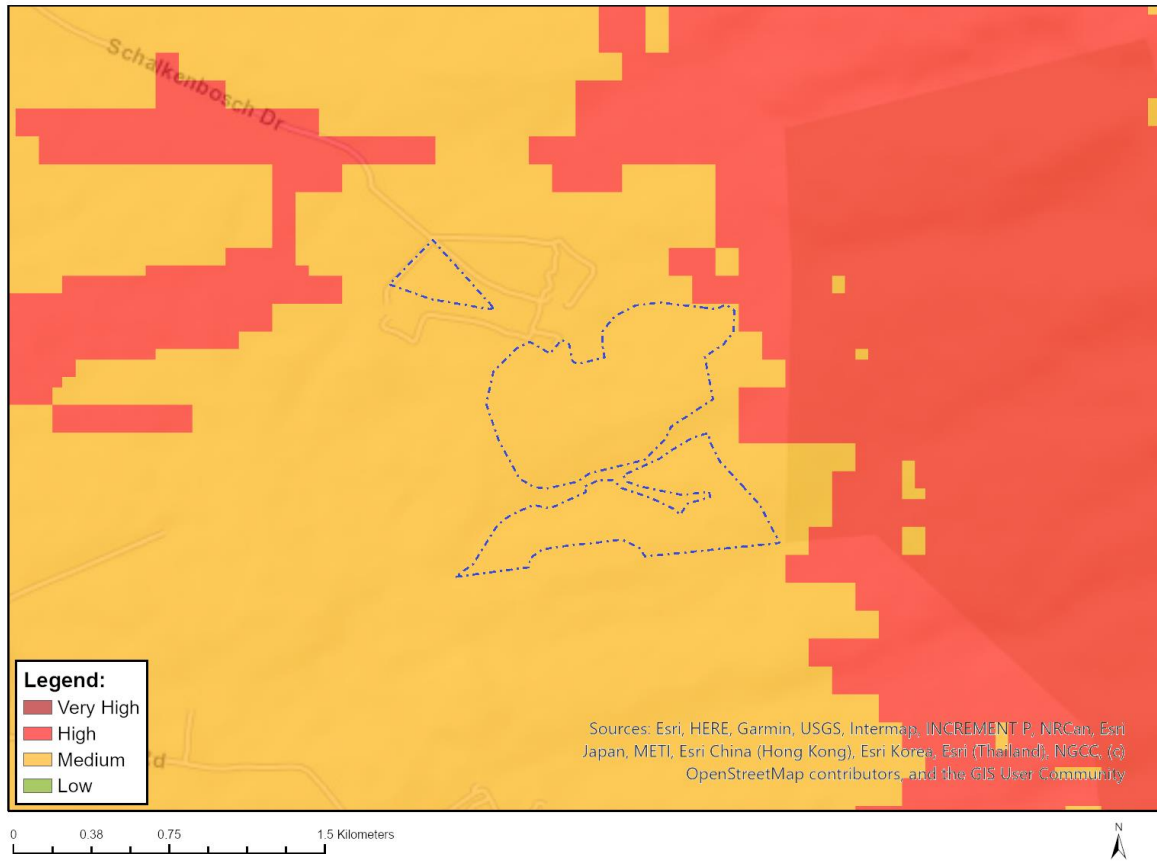


Very High sensitivity	High sensitivity	Medium sensitivity	Low sensitivity
X			

#### Sensitivity Features:

Sensitivity	Feature(s)
High	Rainfed Annual Crop Cultivation / Planted Pastures
High	08. Moderate
Low	05. Low
Low	04. Low-Very low
Medium	06. Low-Moderate
Medium	07. Low-Moderate
Very High	Wolseley PAA

## MAP OF RELATIVE ANIMAL SPECIES THEME SENSITIVITY



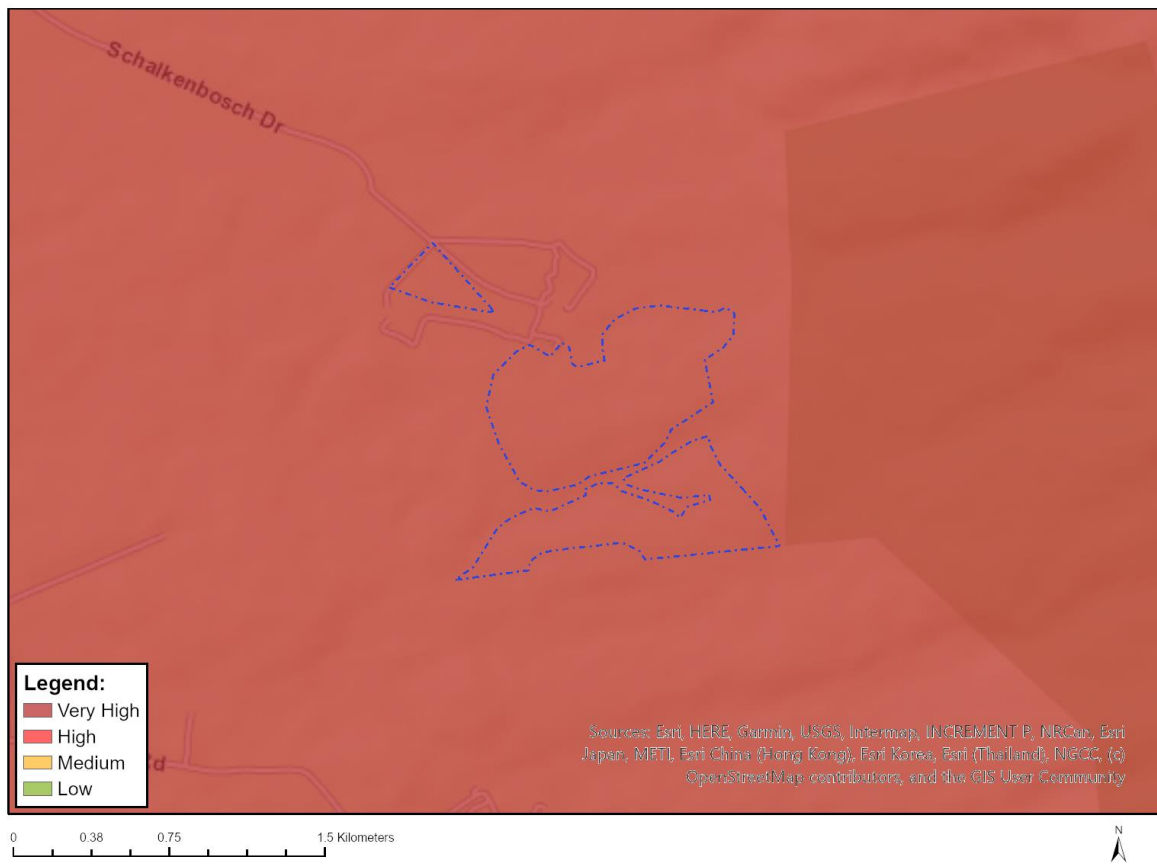
Where only a sensitive plant unique number or sensitive animal unique number is provided in the screening report and an assessment is required, the environmental assessment practitioner (EAP) or specialist is required to email SANBI at [eiadatarequests@sanbi.org.za](mailto:eiadatarequests@sanbi.org.za) listing all sensitive species with their unique identifiers for which information is required. The name has been withheld as the species may be prone to illegal harvesting and must be protected. SANBI will release the actual species name after the details of the EAP or specialist have been documented.

Very High sensitivity	High sensitivity	Medium sensitivity	Low sensitivity
		X	

### Sensitivity Features:

Sensitivity	Feature(s)
Medium	Sensitive species 19
Medium	Invertebrate-Conocephalus peringueyi
Medium	Invertebrate-Brinckiella aptera

## MAP OF RELATIVE AQUATIC BIODIVERSITY THEME SENSITIVITY

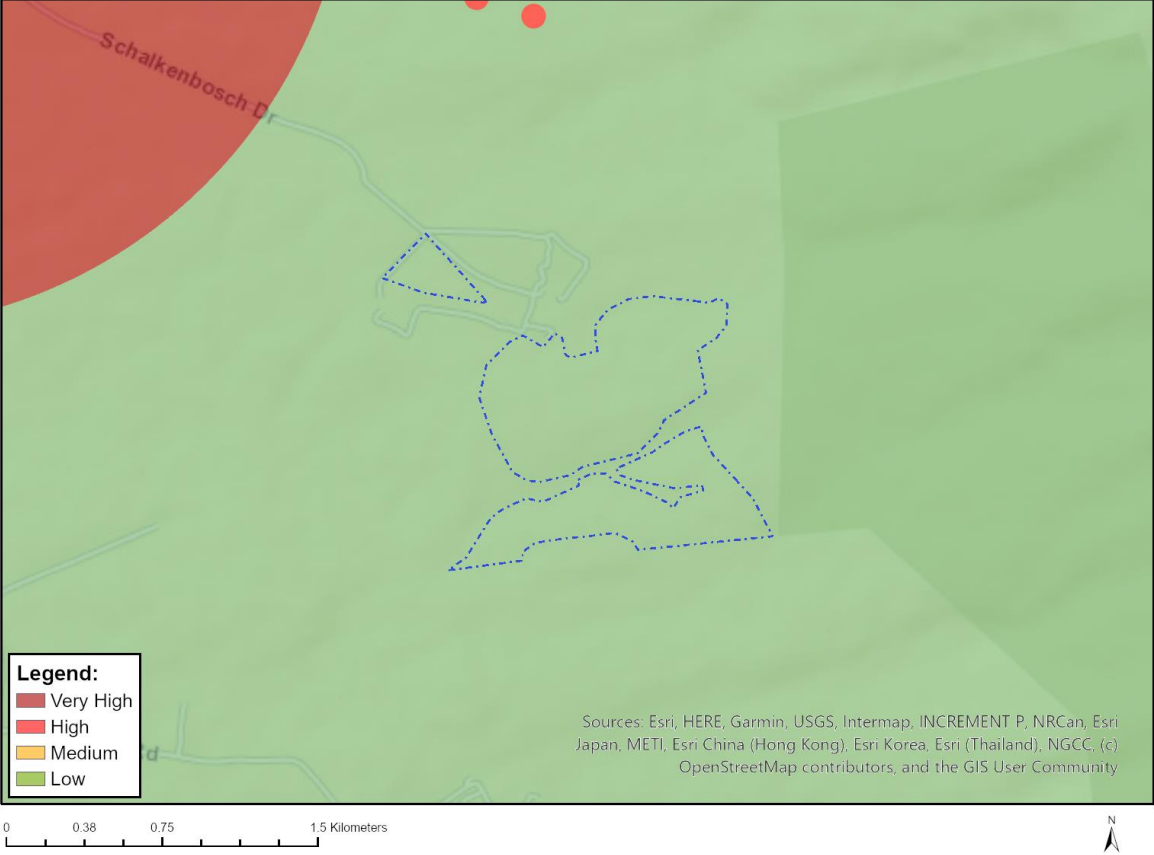


Very High sensitivity	High sensitivity	Medium sensitivity	Low sensitivity
X			

### Sensitivity Features:

Sensitivity	Feature(s)
Very High	CBA: Wetland
Very High	Wetlands_Channelled valley-bottom
Very High	Wetlands_Seep
Very High	SWSA (sw)_Boland

# MAP OF RELATIVE ARCHAEOLOGICAL AND CULTURAL HERITAGE THEME SENSITIVITY

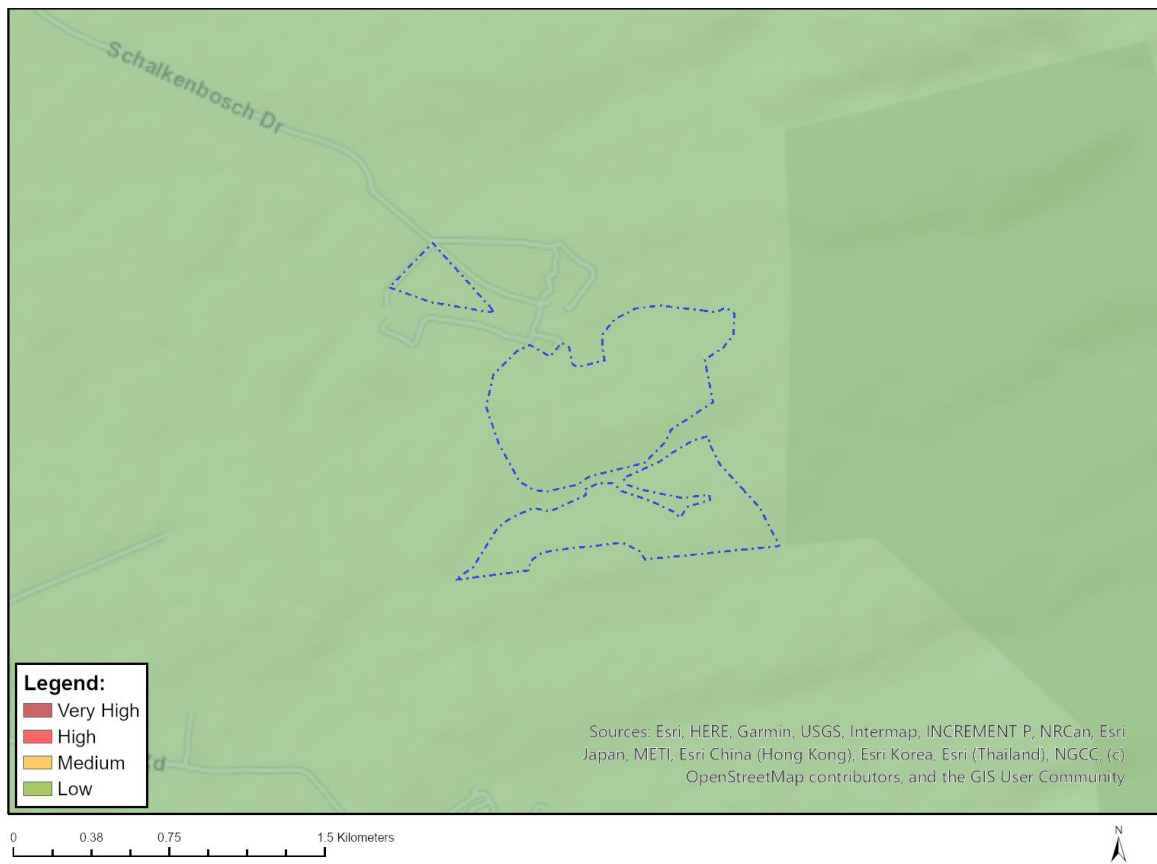


Very High sensitivity	High sensitivity	Medium sensitivity	Low sensitivity
			X

**Sensitivity Features:**

Sensitivity	Feature(s)
Low	Low Sensitivity

## MAP OF RELATIVE CIVIL AVIATION THEME SENSITIVITY

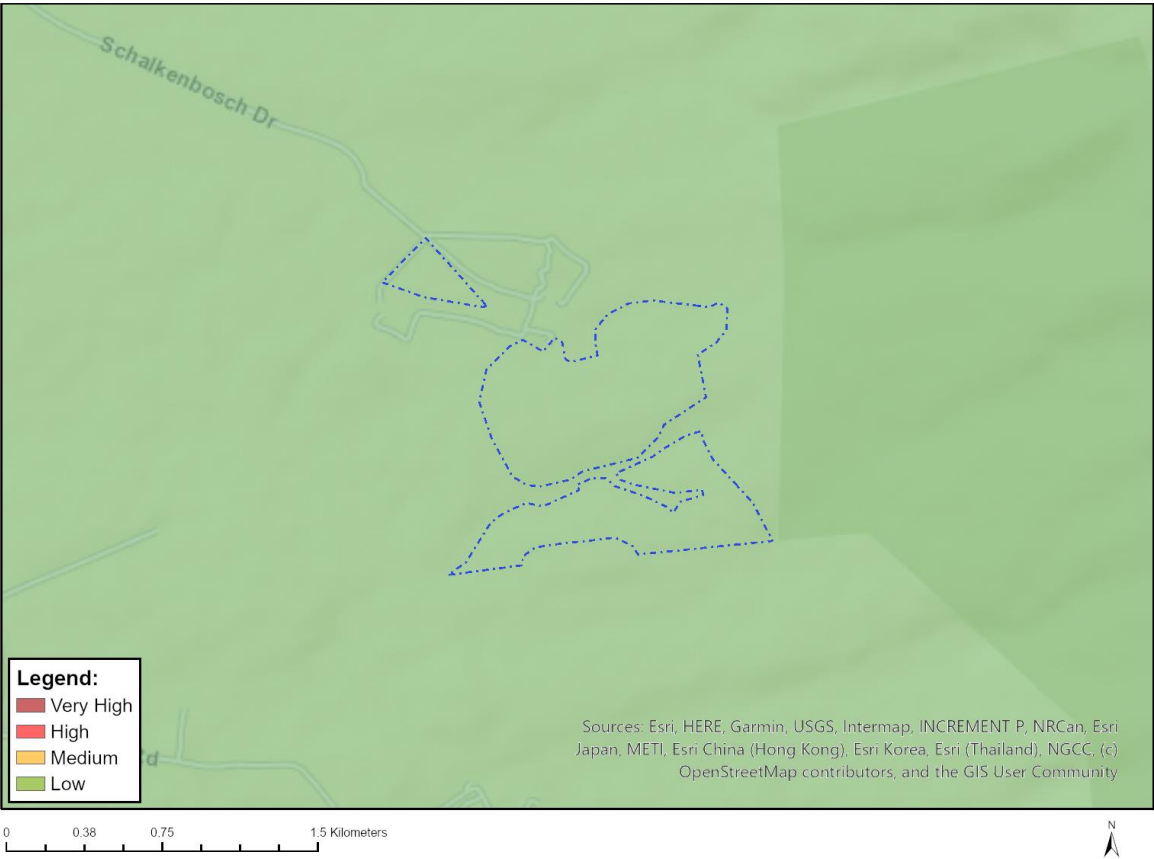


Very High sensitivity	High sensitivity	Medium sensitivity	Low sensitivity
			X

### Sensitivity Features:

Sensitivity	Feature(s)
Low	Low sensitivity

# MAP OF RELATIVE DEFENCE THEME SENSITIVITY

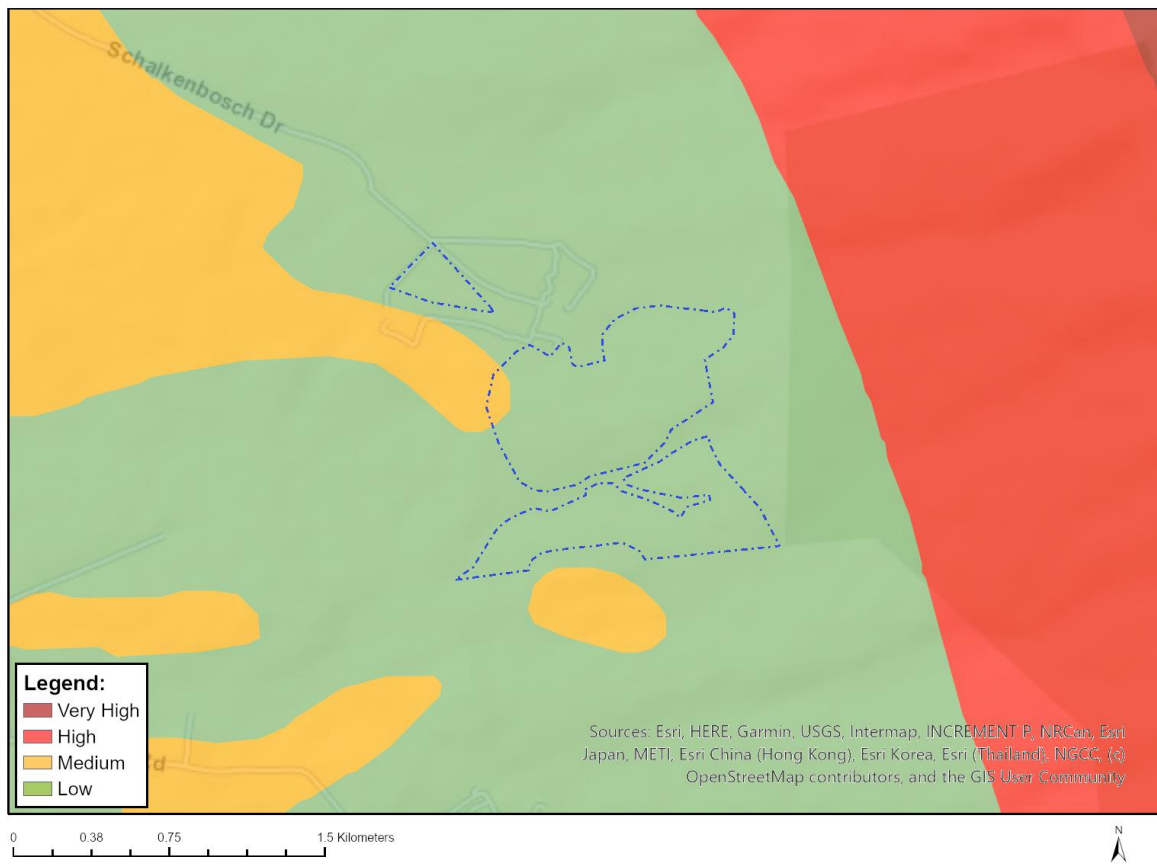


Very High sensitivity	High sensitivity	Medium sensitivity	Low sensitivity
			X

**Sensitivity Features:**

Sensitivity	Feature(s)
Low	Low Sensitivity

## MAP OF RELATIVE PALEONTOLOGY THEME SENSITIVITY

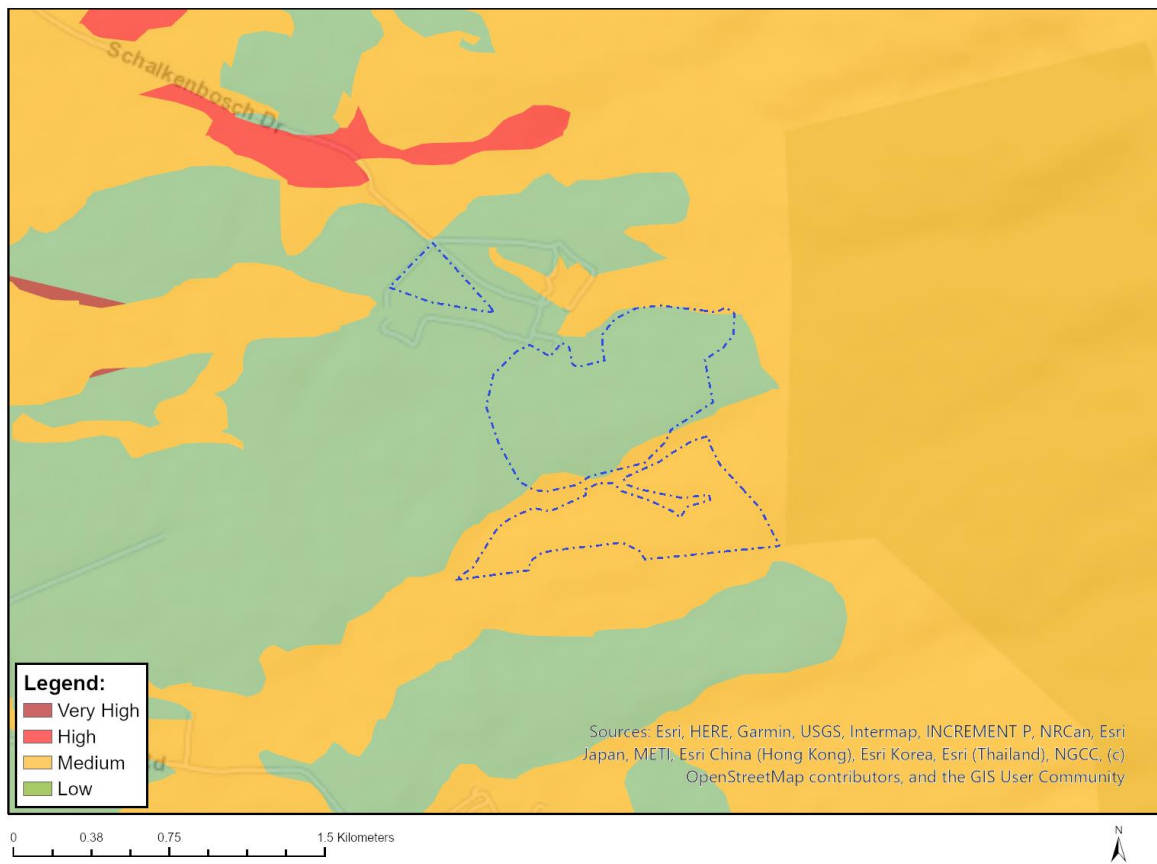


Very High sensitivity	High sensitivity	Medium sensitivity	Low sensitivity
		X	

### Sensitivity Features:

Sensitivity	Feature(s)
Low	Features with a Low paleontological sensitivity
Medium	Features with a Medium paleontological sensitivity

## MAP OF RELATIVE PLANT SPECIES THEME SENSITIVITY



Where only a sensitive plant unique number or sensitive animal unique number is provided in the screening report and an assessment is required, the environmental assessment practitioner (EAP) or specialist is required to email SANBI at [eiadatarequests@sanbi.org.za](mailto:eiadatarequests@sanbi.org.za) listing all sensitive species with their unique identifiers for which information is required. The name has been withheld as the species may be prone to illegal harvesting and must be protected. SANBI will release the actual species name after the details of the EAP or specialist have been documented.

Very High sensitivity	High sensitivity	Medium sensitivity	Low sensitivity
		X	

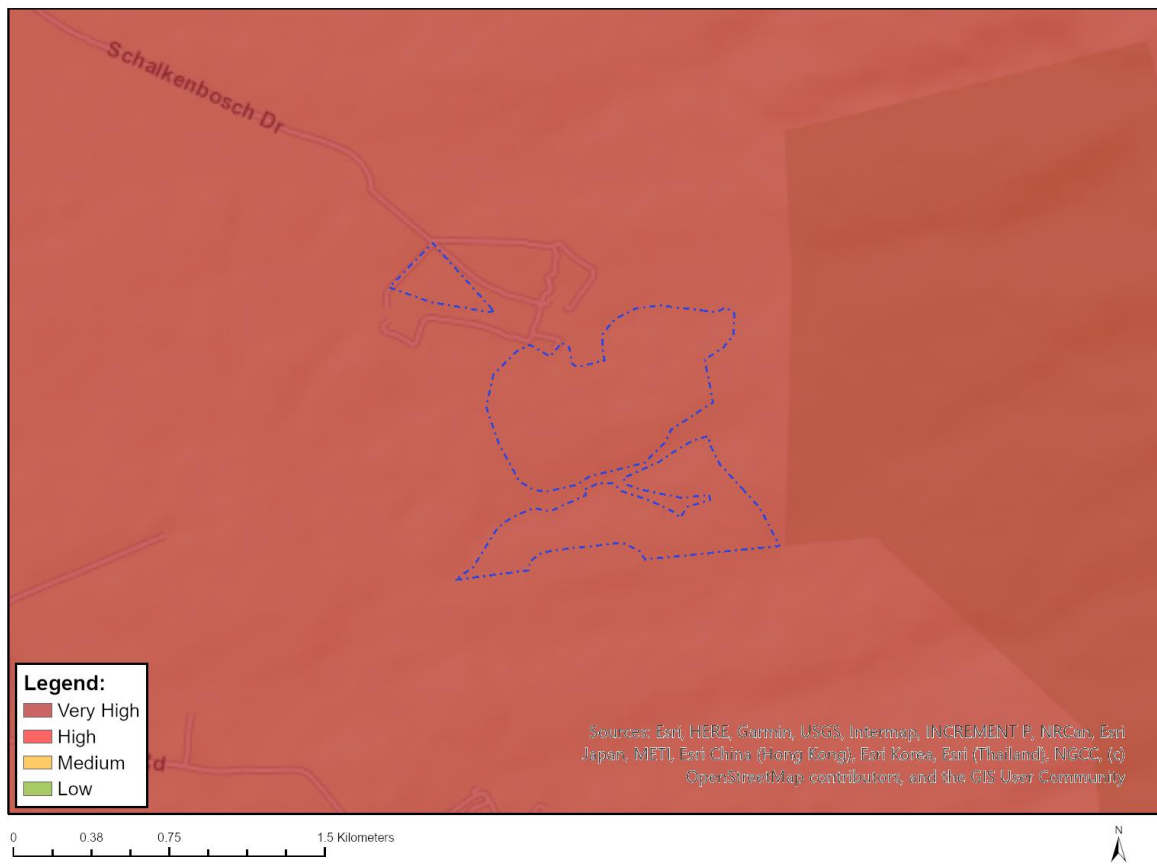
### Sensitivity Features:

Sensitivity	Feature(s)
Low	Low Sensitivity
Medium	Lampranthus filicaulis
Medium	Lampranthus leptaleon
Medium	Lampranthus peacockiae
Medium	Lampranthus scaber
Medium	Lampranthus sociorum
Medium	Lampranthus spiniformis
Medium	Lampranthus stenopetalus
Medium	Ruschia diversifolia
Medium	Drosanthemum worcesterense
Medium	Drosanthemum hispifolium
Medium	Xiphotheca lanceolata
Medium	Aspalathus aculeata

Medium	<i>Aspalathus lanifera</i>
Medium	<i>Aspalathus muraltioides</i>
Medium	<i>Aspalathus ulicina</i> subsp. <i>ulicina</i>
Medium	<i>Aspalathus varians</i>
Medium	<i>Otholobium</i> sp. nov. (Stirton & Zantovska 11281 NBG)
Medium	<i>Rafnia lancea</i>
Medium	<i>Lebeckia grandiflora</i>
Medium	<i>Lebeckia plukenetiana</i>
Medium	<i>Brunia myrtoides</i>
Medium	<i>Sorocephalus imbricatus</i>
Medium	<i>Leucadendron chamelaea</i>
Medium	<i>Leucadendron corymbosum</i>
Medium	<i>Leucadendron gydoense</i>
Medium	<i>Leucadendron lanigerum</i> var. <i>laevigatum</i>
Medium	<i>Leucadendron lanigerum</i> var. <i>lanigerum</i>
Medium	<i>Leucospermum hypophyllocarpodendron</i> subsp. <i>canaliculatum</i>
Medium	<i>Protea burchellii</i>
Medium	<i>Protea restionifolia</i>
Medium	<i>Protea scorzonerifolia</i>
Medium	<i>Spatalla caudata</i>
Medium	<i>Serruria candicans</i>
Medium	<i>Wahlenbergia brachyphylla</i>
Medium	Sensitive species 794
Medium	<i>Lobostemon capitatus</i>
Medium	<i>Echiostachys incanus</i>
Medium	<i>Aristea nigrescens</i>
Medium	<i>Tritoniopsis elongata</i>
Medium	<i>Hesperantha spicata</i> subsp. <i>spicata</i>
Medium	Sensitive species 631
Medium	Sensitive species 1134
Medium	<i>Geissorhiza furva</i>
Medium	<i>Geissorhiza geminata</i>
Medium	<i>Geissorhiza inaequalis</i>
Medium	<i>Geissorhiza erosa</i>
Medium	<i>Sparaxis grandiflora</i> subsp. <i>grandiflora</i>
Medium	<i>Thereianthus longicollis</i>
Medium	<i>Ixia abbreviata</i>
Medium	<i>Ixia campanulata</i>
Medium	<i>Ixia erubescens</i>
Medium	<i>Ixia rouxii</i>
Medium	<i>Ixia viridiflora</i>
Medium	Sensitive species 560
Medium	Sensitive species 1253
Medium	Sensitive species 572
Medium	Sensitive species 1
Medium	Sensitive species 1140
Medium	Sensitive species 995
Medium	Sensitive species 1146
Medium	Sensitive species 863
Medium	<i>Pauridia alba</i>
Medium	<i>Monopsis variifolia</i>
Medium	<i>Oxalis droseroides</i>
Medium	<i>Oxalis meisneri</i>
Medium	<i>Erica doliiformis</i>
Medium	<i>Erica oxysepala</i>
Medium	<i>Erica caprina</i>
Medium	Sensitive species 444
Medium	Sensitive species 1240
Medium	Sensitive species 259
Medium	Sensitive species 756

Medium	<i>Isoetes capensis</i>
Medium	Sensitive species 105
Medium	<i>Isolepis leucoloma</i>
Medium	<i>Anthochortus insignis</i>
Medium	<i>Hypodiscus rugosus</i>
Medium	<i>Anisodonteia biflora</i>
Medium	<i>Cephalaria scabra</i>
Medium	Sensitive species 501
Medium	Sensitive species 848
Medium	Sensitive species 263
Medium	Sensitive species 706
Medium	Sensitive species 682
Medium	Sensitive species 266
Medium	Sensitive species 373
Medium	<i>Pterygodium microglossum</i>
Medium	<i>Evotella rubiginosa</i>
Medium	<i>Lachnaea uniflora</i>
Medium	<i>Metalasia octoflora</i>
Medium	<i>Cineraria alchemilloides</i> subsp. <i>alchemilloides</i>
Medium	<i>Athanasia adenantha</i>
Medium	<i>Athanasia crenata</i>
Medium	<i>Phaneroglossa bolusii</i>
Medium	<i>Osmitopsis nana</i>
Medium	<i>Agathosma trichocarpa</i>
Medium	Sensitive species 544
Medium	<i>Wurmbea inusta</i>
Medium	<i>Phylla plumosa</i> var. <i>horizontalis</i>
Medium	<i>Codonorhiza azurea</i>
Medium	<i>Skiatophytum skiatophytoides</i>
Medium	<i>Lampranthus debilis</i>
Medium	<i>Drosanthemum striatum</i>
Medium	<i>Psoralea alata</i>
Medium	<i>Aspalathus recurva</i>
Medium	<i>Protea rupicola</i>
Medium	Sensitive species 1209
Medium	Sensitive species 593
Medium	Sensitive species 599
Medium	<i>Restio paludosus</i>
Medium	<i>Restio rigoratus</i>
Medium	<i>Pachites bodkinii</i>
Medium	<i>Heliophila elata</i>
Medium	<i>Lachnaea capitata</i>
Medium	<i>Lachnaea grandiflora</i>
Medium	<i>Cotula pusilla</i>
Medium	Sensitive species 1225

## MAP OF RELATIVE TERRESTRIAL BIODIVERSITY THEME SENSITIVITY



Very High sensitivity	High sensitivity	Medium sensitivity	Low sensitivity
X			

### Sensitivity Features:

Sensitivity	Feature(s)
Very High	CBA: Terrestrial
Very High	CBA2: Terrestrial
Very High	SWSA (sw)_Boland
Very High	EN_Breede Alluvium Fynbos
Very High	EN_Breede Shale Fynbos
Very High	EN_Breede Shale Renosterveld