

WG.21 East			WG.21 East		
Name	Y Metres	X	Name	Y Metres	X
Constants		0,00	Constants		0,00
MA	+9 607,11	+3 771 695,89	Amended Approved Quarry		
MB	+9 395,46	+3 771 966,60	Q5A	+9 589,41	+3 771 954,98
MC	+9 933,33	+3 772 238,48	Q5B	+9 562,46	+3 771 963,33
MD	+10 257,10	+3 772 331,18	Q5C	+9 715,16	+3 772 074,25
ME	+10 355,05	+3 772 377,17	Q5D	+9 723,15	+3 772 059,46
M			3 539 square metres		
N			Authorized Quarry being mined		
P			Q6A	+9 729,27	+3 771 829,75
MF	+10 646,54	+3 772 364,35	Q6B	+9 714,64	+3 771 849,24
MG	+10 873,92	+3 772 370,82	Q6C	+9 854,10	+3 771 941,83
MH	+11 051,21	+3 772 228,80	Q6D	+9 987,70	+3 772 019,79
MJ	+10 902,07	+3 772 163,03	Q6E	+10 188,59	+3 772 108,48
MK	+10 667,90	+3 772 171,37	Q6F	+10 264,65	+3 772 143,56
ML	+10 230,50	+3 772 043,59	Q6G	+10 421,66	+3 772 198,14
41,4775 hectares			Q6H	+10 418,73	+3 772 177,67
Additional Proposed Quarry			Q6J	+10 274,40	+3 772 129,92
Q1A	+10 274,99	+3 772 236,39	Q6K	+10 052,06	+3 772 034,41
Q1B	+10 250,63	+3 772 263,05	Q6L	+9 800,46	+3 771 887,25
Q1C	+10 306,96	+3 772 304,55	1,3462 hectares		
Q1D	+10 375,88	+3 772 333,91	Authorized Quarry being mined		
Q1E	+10 403,84	+3 772 300,60	Q7A	+9 700,02	+3 771 864,84
6 179 square metres			Q7B	+9 701,87	+3 771 885,81
Additional Proposed Quarry			Q7C	+10 006,56	+3 772 083,34
Q2A	+9 895,63	+3 772 068,95	Q7D	+10 313,54	+3 772 234,98
Q2B	+9 876,83	+3 772 103,56	Q7E	+10 427,86	+3 772 282,65
Q2C	+9 973,89	+3 772 146,62	Q7F	+10 400,38	+3 772 252,16
Q2D	+9 995,15	+3 772 113,98	Q7G	+10 330,85	+3 772 213,36
4 187 square metres			Q7H	+10 016,95	+3 772 068,52
Amended Approved Quarry			1,6303 hectares		
Q3A	+10 149,24	+3 772 185,73	Amended Approved Quarry		
Q3B	+10 128,58	+3 772 218,02	Q8A	+9 565,40	+3 771 773,24
Q3C	+10 168,35	+3 772 242,09	Q8B	+9 522,63	+3 771 826,24
Q3D	+10 198,74	+3 772 206,38	Q8C	+9 538,32	+3 771 840,13
2 088 square metres			Q8D	+9 593,80	+3 771 805,34
Amended Approved Quarry			2 097 square metres		
Q4A	+9 810,44	+3 772 087,54			
Q4B	+9 790,37	+3 772 123,00			
Q4C	+9 873,55	+3 772 170,74			
Q4D	+9 964,93	+3 772 182,52			
Q4E	+9 971,37	+3 772 148,05			
Q4F	+9 913,91	+3 772 123,63			
8 579 square metres					

REGIONAL MANAGER
Western Cape Region

APPLICANT
Head of Strategy and Corporate Services for and behalf of ECCA HOLDINGS (Pty) (Ltd)

Date

ECCA HOLDINGS:- (Cape Bentonite Mine)
MINING RIGHT.

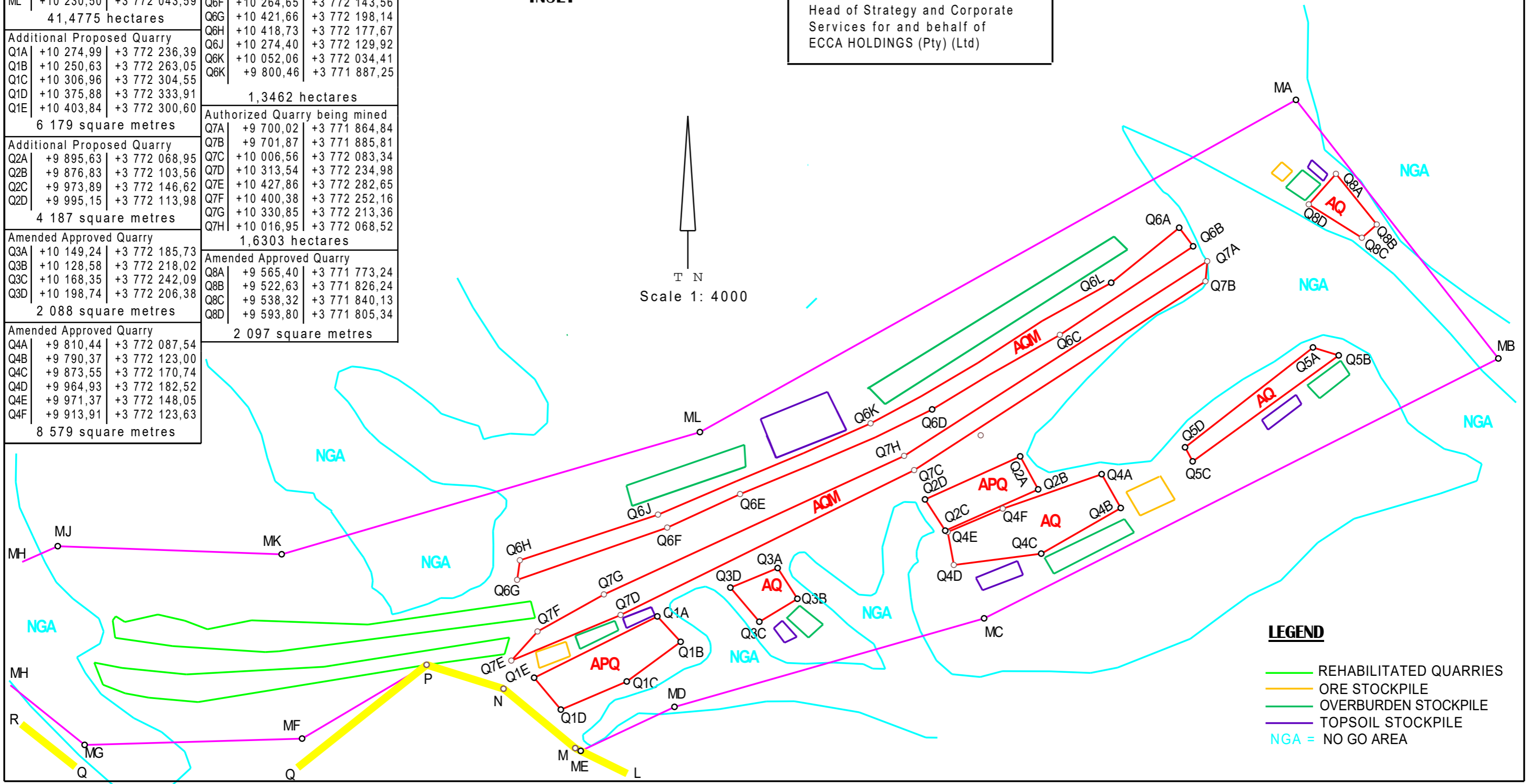
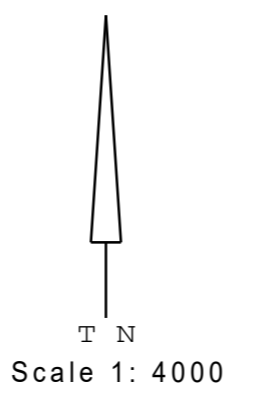
Holder of Right.
ECCA HOLDINGS (Pty) Ltd
Reg.No.1963/005589/07

F. M. HATTINGH
Professional Land Surveyor:- Registration No. PLS0252D
Date: 5 May 2025

MINERAL MINED : BENTONITE AND ZEOLITE

CO-ORDINATE LIST WGS Hartebeesthoek 94

INSET



- LEGEND**
- REHABILITATED QUARRIES
 - ORE STOCKPILE
 - OVERBURDEN STOCKPILE
 - TOPSOIL STOCKPILE
 - NGA = NO GO AREA